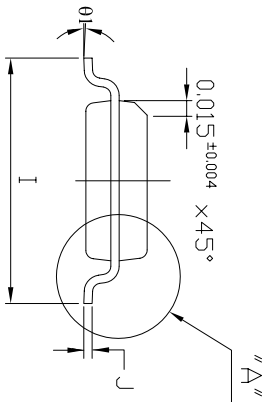
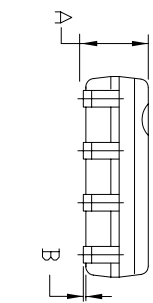
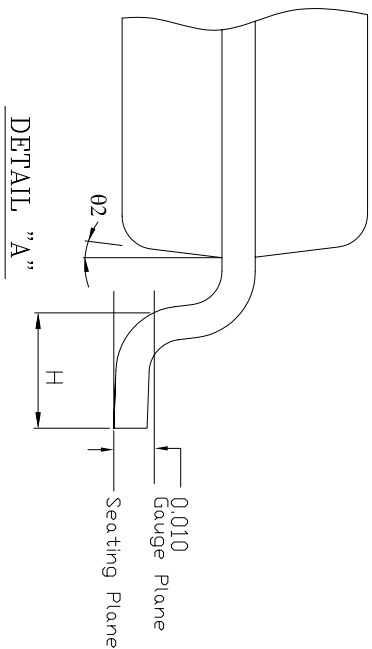
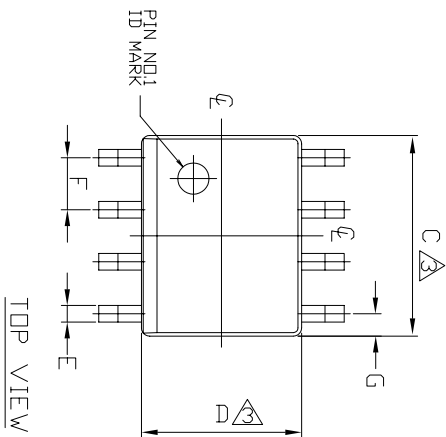


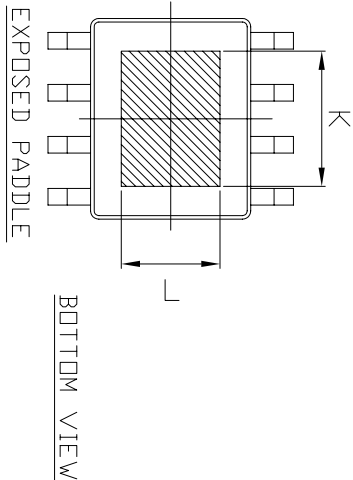
REVISIONS

REV	CHANGES	DATE	By	Appr
B	Dim. K from .115 to .130 +/- .005 Dim. L from .079 to .095 +/- .005	9/23/2011	DT	KST
C	Dim. K from .130+/--.005 to .135+/--.010 Dim. L from .095+/--.005 to .095+/--.010	9/29/2011	DT	KST



SYMBOL	8 SDIC	
	MIN	MAX
A	0.054	0.068
B	0.001	0.004
C	0.189	0.196
D	0.150	0.157
E	0.014	0.019
F	0.050	BSC
G	0.0215	REF
H	0.020	0.040
I	0.229	0.244
J	0.0075	0.0098
K	0.125	0.145
L	0.085	0.105
Ø1	0°	8°
Ø2	7°	BSC

- NOTE:
1. TOP PACKAGE SURFACE TO BE MATTE FINISH VDI 24-27.
 2. BOTTOM PACKAGE SURFACE TO BE MATTE FINISH VDI 8-11.
 3. DIMENSION ARE EXCLUSIVE MOLD FLASH AND GATE BURR.
 4. FOOT LENGTH MEASURING IS BASED ON THE GAUGE PLANE METHOD.



DRN BY	DT	Polyfet RF Devices	
CHKD	KST	9/27/11	
ELECT		Plastic SDIC8	
MECH		SIZE	FSCM NO.
PRDC		A	
QUAL			
PGMS			
			REV
			C