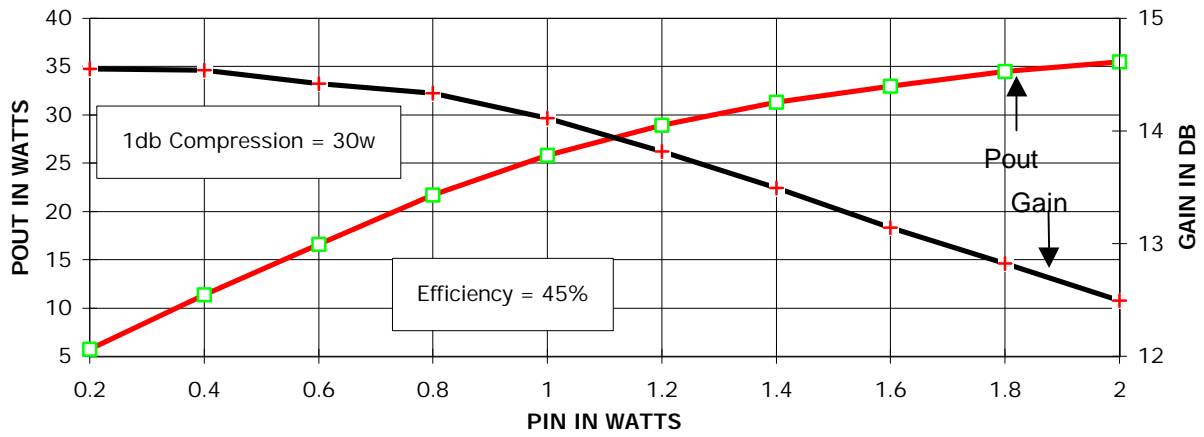
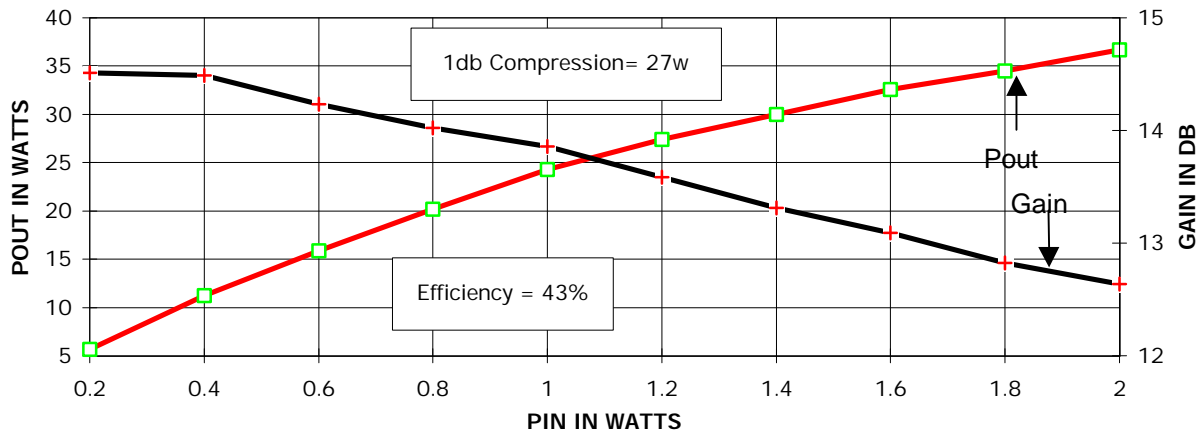


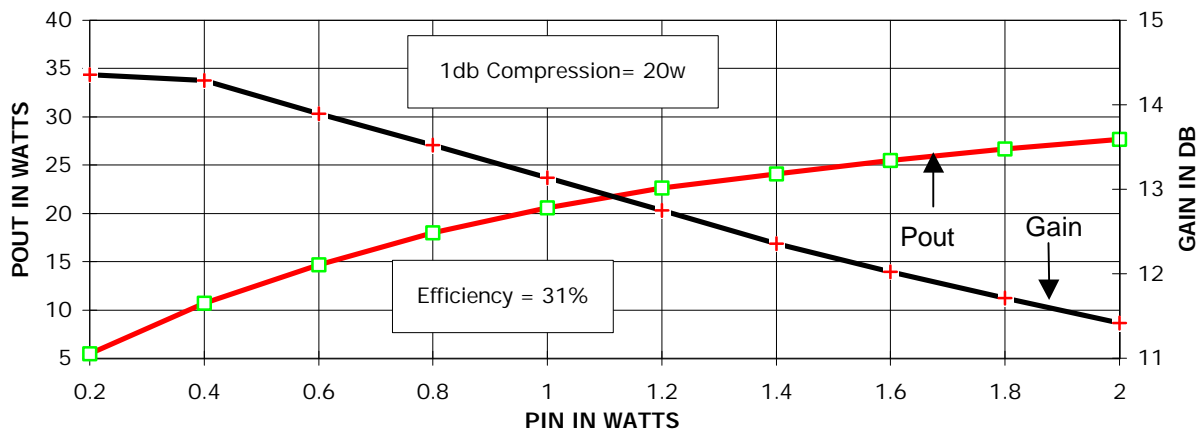
TB143 Pin vs Pout F=400 MHZ; Idq=.6;Vds=28V

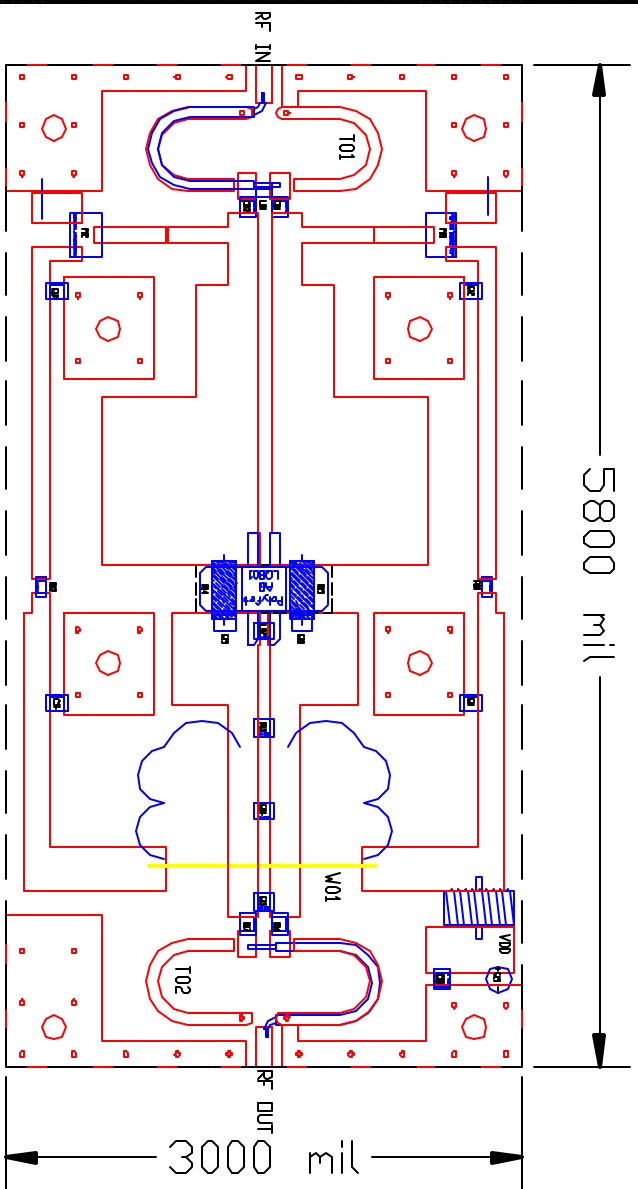


TB143 Pin vs Pout F=700 MHZ; Idq=.6;Vds=28V



TB143 Pin vs Pout F=1000 MHZ; Idq=.6;Vds=28V





PCB Material : Double Side Teflon
 ER=2.5, H=32, T=1.4

SYMBOL	VALUE	DESCRIPTION
C01, C02	200pF	ATC-100B Chip Cap.
C03	4.2pF	ATC-100B Chip Cap.
C04	300pF	ATC-100B Chip Cap.
C05	27pF	ATC-100B Chip Cap.
C06, C07	30pF	ATC-100B Chip Cap.
C08, C09	.01uF	ATC-100B Chip Cap.
L01, L02	150uH	Toko 0805
V01	---	#18AWG Wire Bridge
T01	1500mH	UT34-25 Coaxial
T02	1500mH	UT34-50 Coaxial
R01, R02	56k	1206 Chip Res.
R03, R04	100ohm	Axial
P01, P02	10k	6x6mm Potentiometer
VDD	28V	DC Power Supply
Bias	500mA	Bias Current

DRN BY: M. the v	10/27/99	POLYFET RF DEVICES	
ELECT :		SIZE	F50M N01
MECH :		PRIC :	TB-143
QUA :		REV :	LQ801
PKGS :		SCALE :	SHEET 1 OF 1

400-1000MHz 20w 1db 13db gain

LP821 5 Watt Flatness Chart

