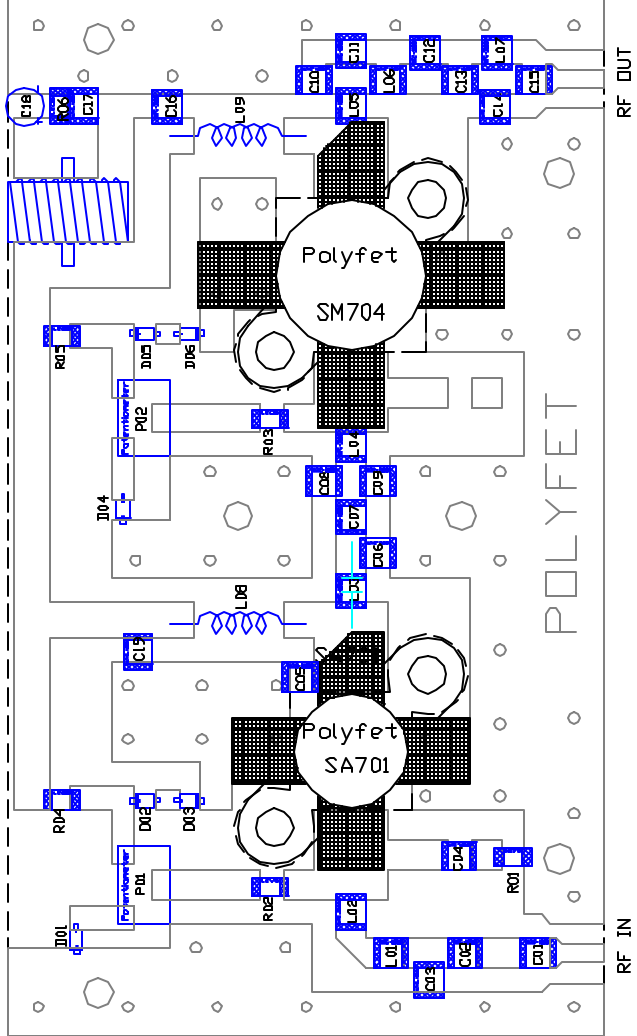


DRN BY	J.Citrolo	7/13/01	Polyfet RF Devices
CHKD			
ELECT			100 Watt 118Mhz to 140 Mhz
MECH			
PRDC			SIZE FSCM NO. REV
QUAL	A		TB 157 SA 701 SM 704
FORM			



PCB Material : Double Side FR4
 Er=4.5 H=32mil T=0.7

SYMBOL	VALUE	DESCRIPTION
D01, C15	470pf	ATC-1008 Chip Cap.
D02	82pf	ATC-1008 Chip Cap.
D03, C05	410pf	ATC-1008 Chip Cap.
D04, C16, C17, C19	0.01uf	ATC-1008 Chip Cap.
D06	47pf	ATC-1008 Chip Cap.
D07, C13	75pf	ATC-1008 Chip Cap.
D08	22pf	ATC-1008 Chip Cap.
D09, C11	30pf	ATC-1008 Chip Cap.
C10	35pf	ATC-1008 Chip Cap.
C12	65pf	ATC-1008 Chip Cap.
C14	18pf	ATC-1008 Chip Cap.
C19	0.08uF	ATC-1008 Chip Cap.
C18	47uf	63V, Elec. Cap.
L01	4Turn	#22 AWG, ID=0.075in
L02	HalfIn	#22 AWG, Length=0.273in
L03	5Turn	#22 AWG, ID=0.075in
L04	3Turn	#22 AWG, ID=0.075in
L05	2Turn	#22 AWG, ID=0.075in
L06	9Turn	#22 AWG, Length=0.530in
L07	10Turn	#22 AWG, ID=0.075in
L08	10Turn	#20 AWG, ID=0.25in
L09	6Turn	#20 AWG, ID=0.25in
R01	150ohm	1210 Chip Res.
R02, R03	1k	1210 Chip Res.
R04, R05	5k	1210 Chip Res.
R06	10k	1210 Chip Res.
P01, P02	10K	6x6 Potentiometer
D01, D04	75V	50mA Chip Diode
D02, D03, D05, D06	75V	50mA Zener Diode
V001	28V	31 Power Supply
Bk51	40mA	Bks For SIA ID
Bk52	80mA	Bks For SIA 40

DRN BY: ZHU JIN	04/06/2000
CHKD :	
ELECT : ED C	07/12/2001
MECH : ED C	07/12/2001
PRCD :	
QJAL : ED C	07/12/2001
PCMS :	

POLYFET RF DEVICES	
PCB LAYOUT	
118MHz--140MHz Amplifier	
SIZE	F50X100
REV	2
SCALE	1 : 1
SHEET	1 OF 1