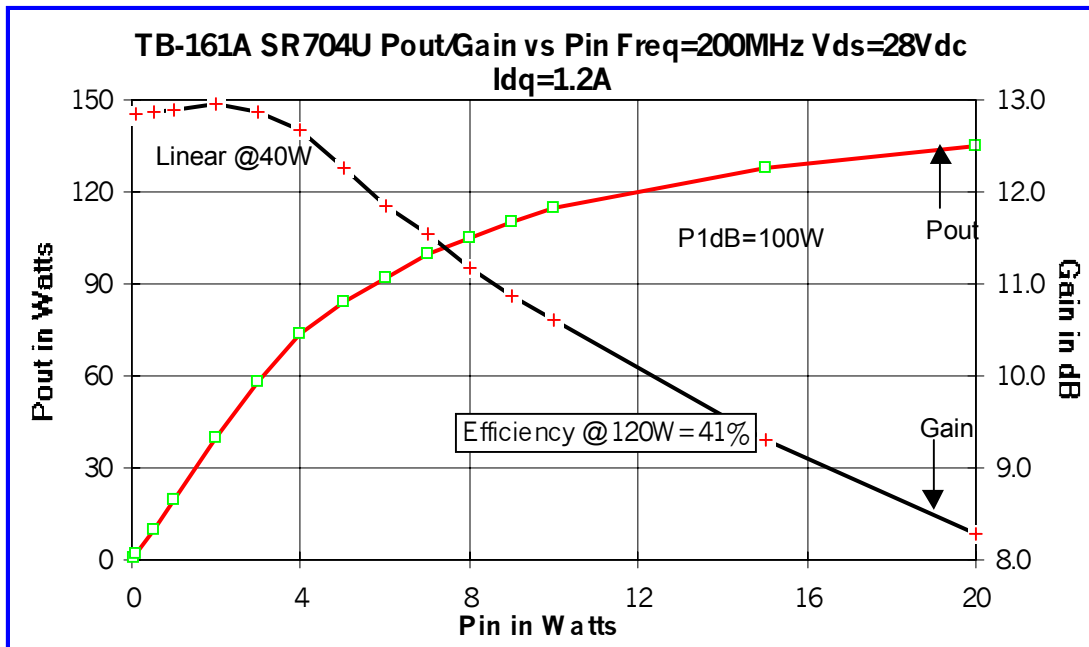
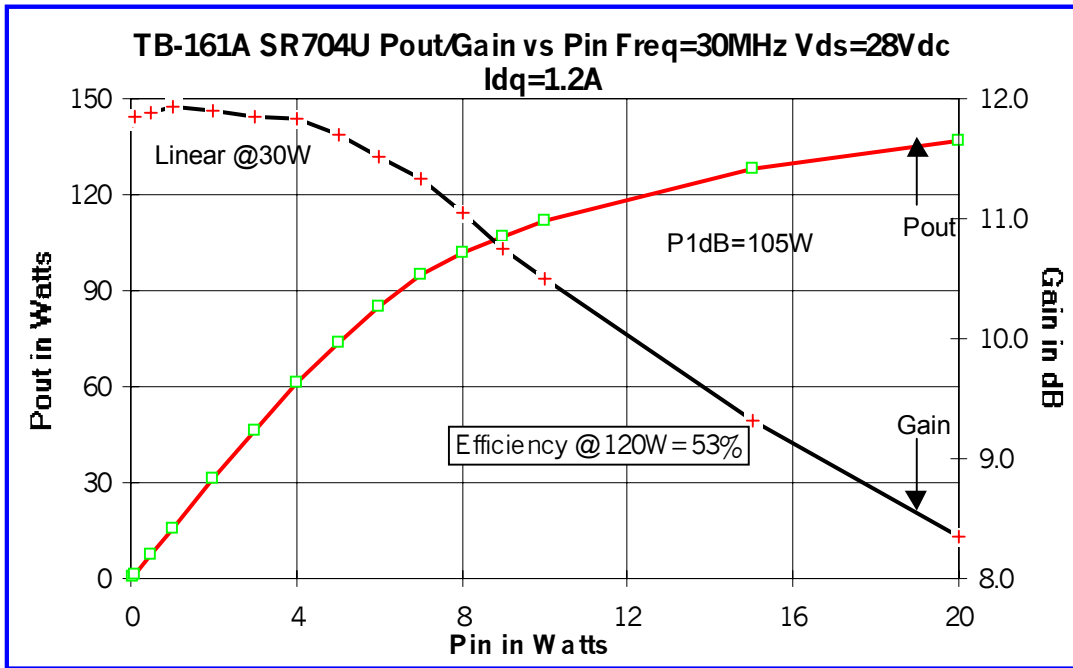
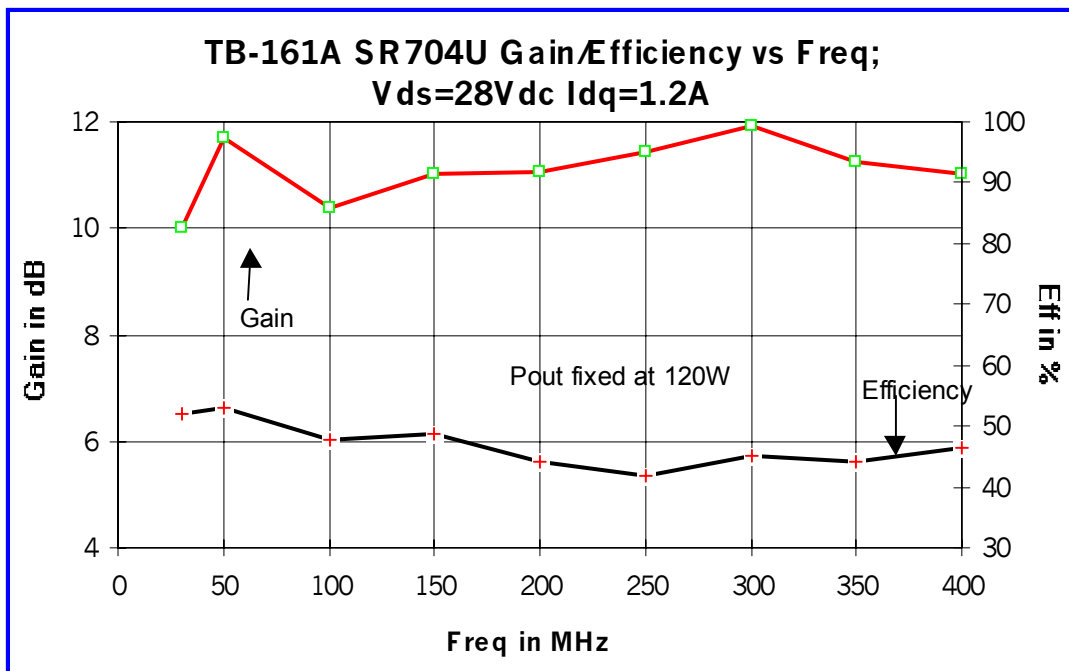
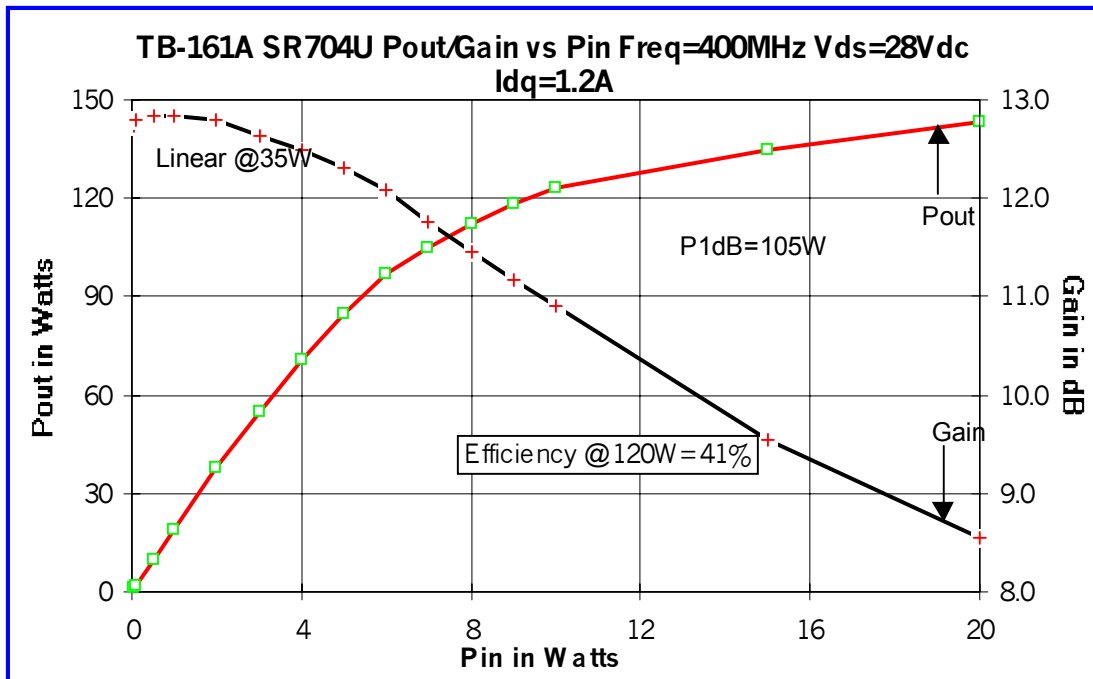
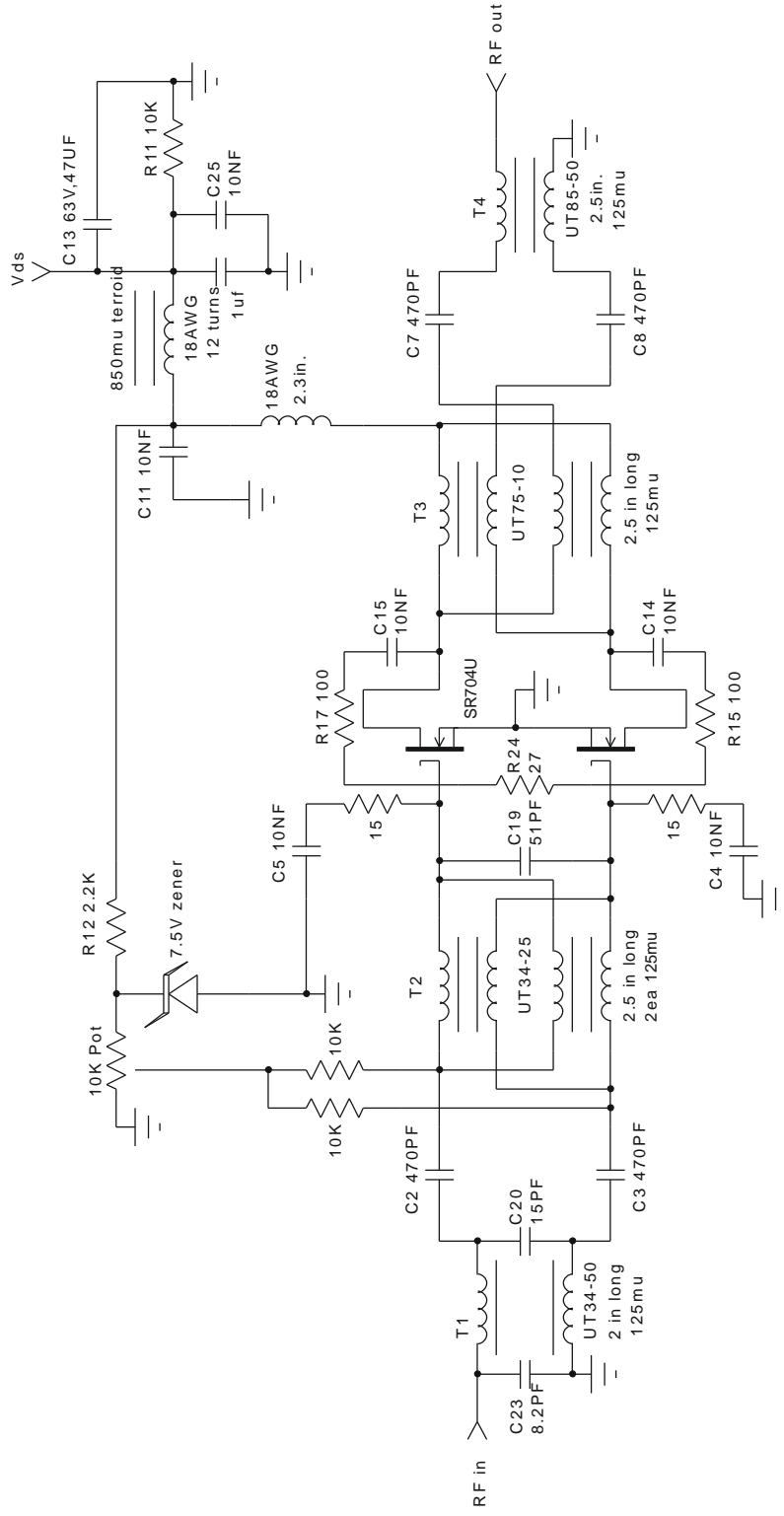


The amp TB161A passed a 3:1 VSWR test at 120 watts out at all phase angles.



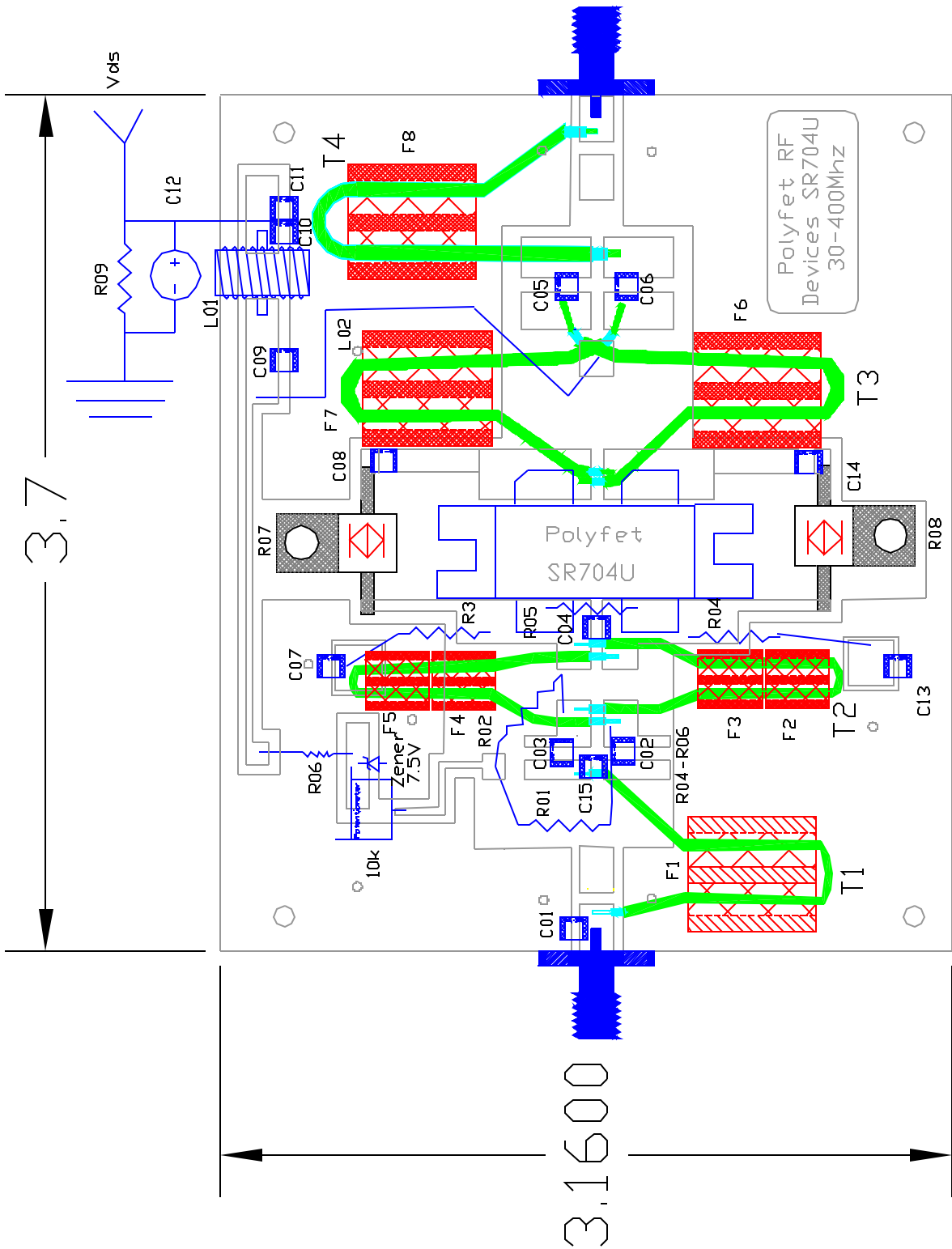




Polyfet RF Devices	
DRN BY J. Citrolo	10/15/02
CHKD	
ELECT	
MECH	
PROC	
QUAL	
PGMS	
TB 161A 30-400Mhz 120W	
SIZE	A
FSCM NO.	SR704U Vds=28Vdc Idq=1A
REV	

C01	ATC-100B	8.2pf
C02,C03	ATC-700B	470pf
C04	ATC-100B	11pf
C05,C06	ATC-700B	470pf
C07-10	ATC-200B	10nf
C13,14	ATC-200B	10nf
C11	1uf, 35V	Tantalum
R01,02,09	1/4W axial	10K ohm
R03,04	1/4W axial	15 ohm
R05	2W axial	15 ohm
R06	1/4W axial	2.2K ohm
R07,08	20W KDI	100 ohm
R09	2W	22 ohm
R13	1/4W	10K ohm
L01	20AWG	10T 850mu
L02	18AWG	straight wire
G01	SR704U	
Vds	28Vdc	
Icq	1.2A	

T1: UT34-50 2.5in.
T2: UT34-25 2.5in.
T3: UT75-10 2.5in.
T4: UT85-50 2.5in.
F8 is epoxied to copper thru pcb.



DRN BY	J. Citrolo	10/15/02
CHKD		
ELECT		
MECH		
PRG		
DRAW		
PBKS		

POLYFET RF DEVICES

SR704U 30-400Mhz TB161A, 28V, 1.2A

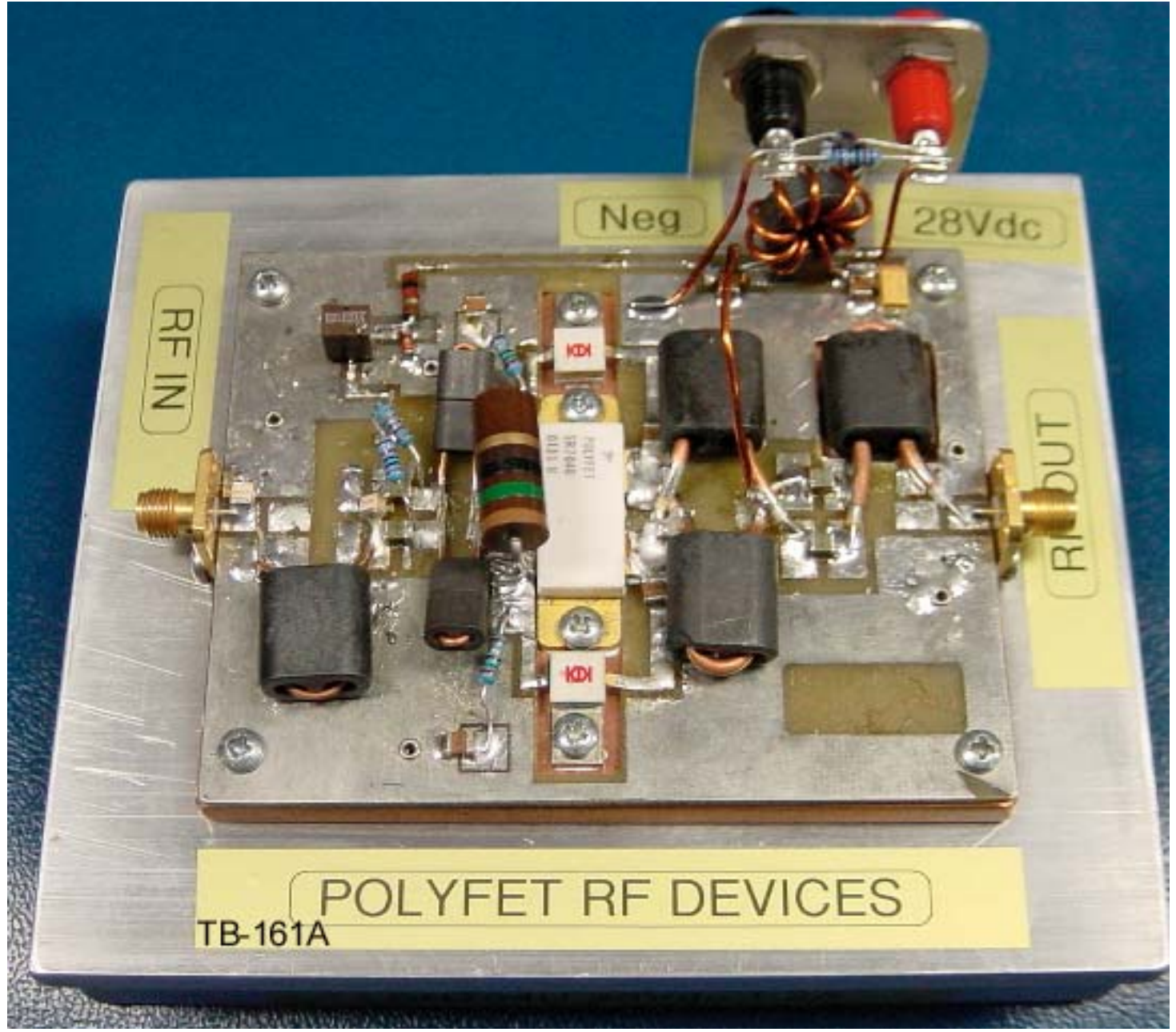
SIZE FSCM NO. 120W, vds=28Vdc, Icq=1.2A

REV A

SCALE: pcb: 1:1

SHEET 1 OF 1

PCB is FR4, H=0.064", double-sided 1 oz. copper, Er=3.5
F2-F5= AMIDON BN-61-2402 125mu BINOCULAR FERRITE
F1-F6-8= FERRONICS 12-365-K 125mu BINOCULAR FERRITE



RF IN

Neg

28Vdc

RF OUT

POLYFET RF DEVICES

TB-161A