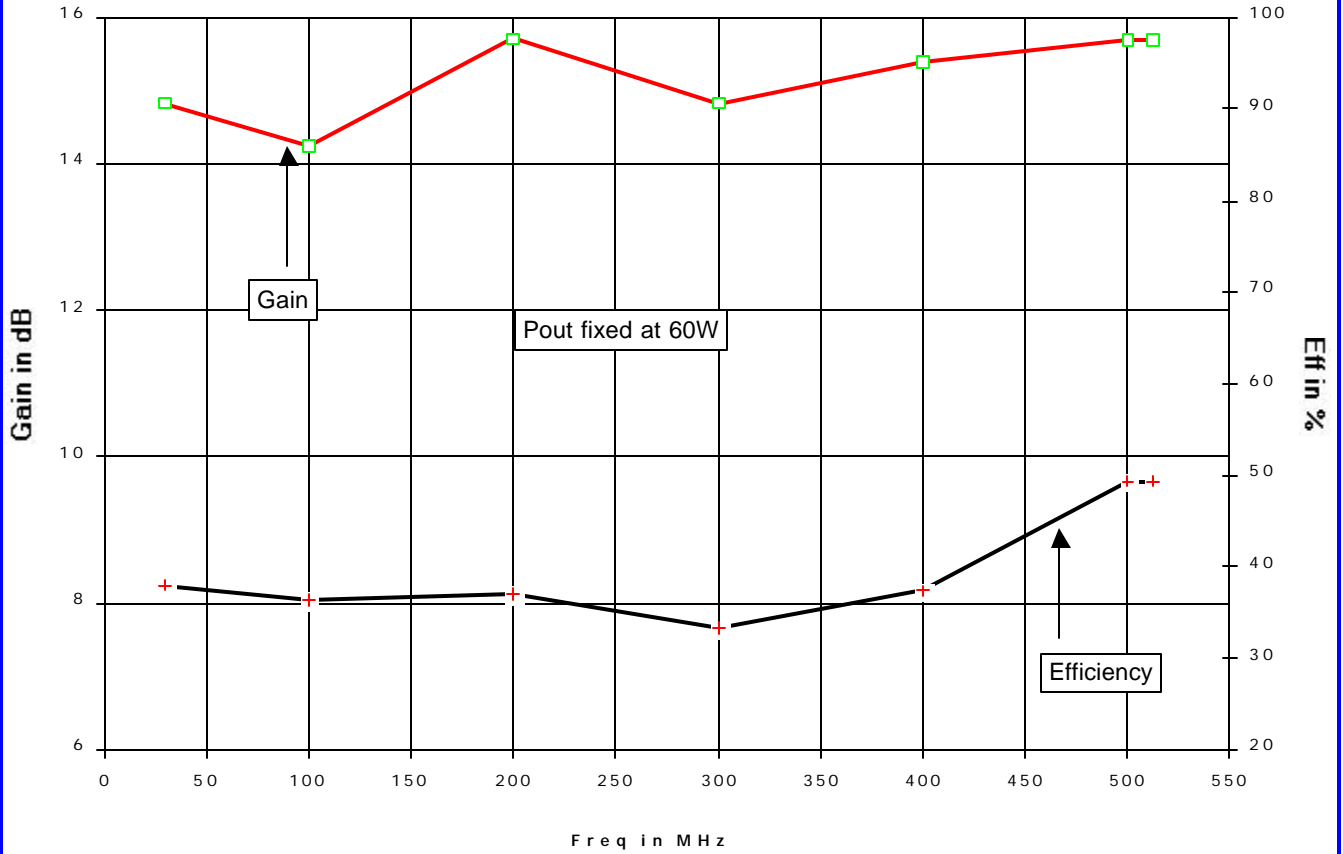
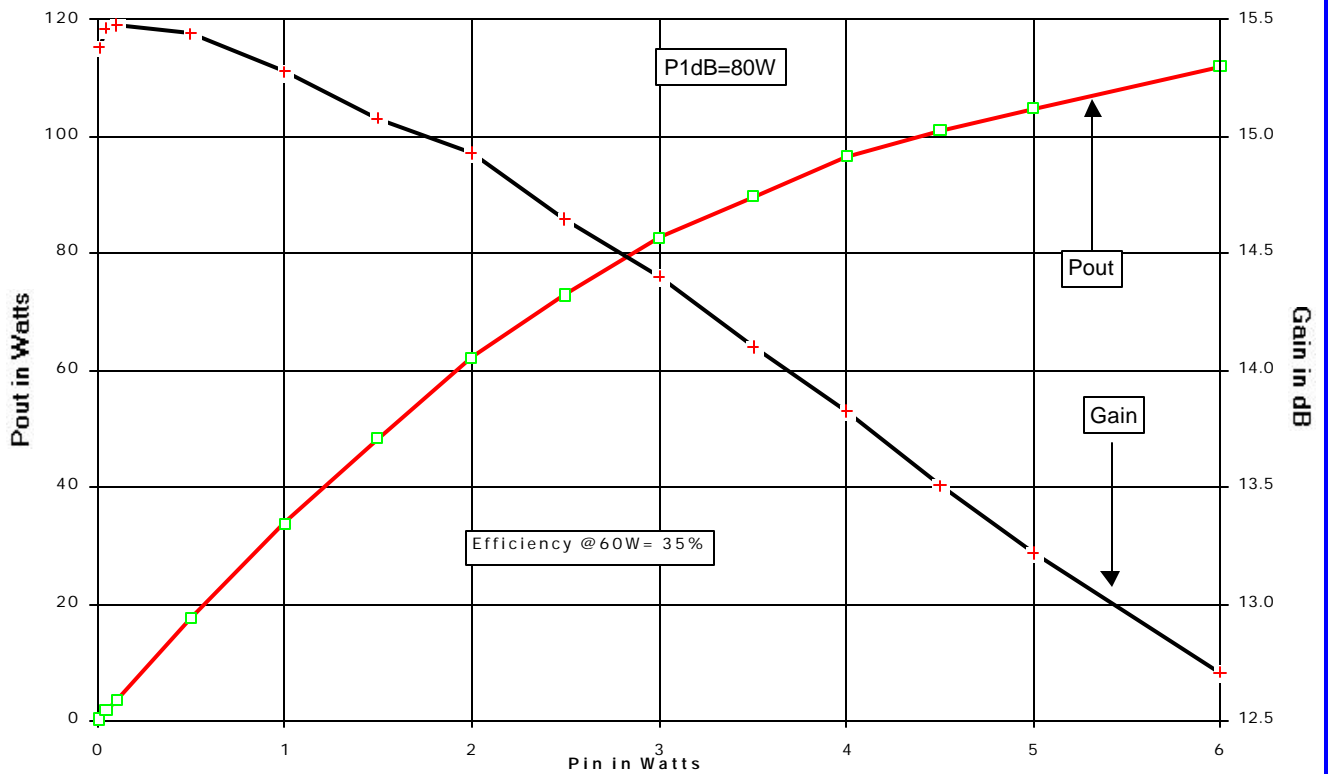


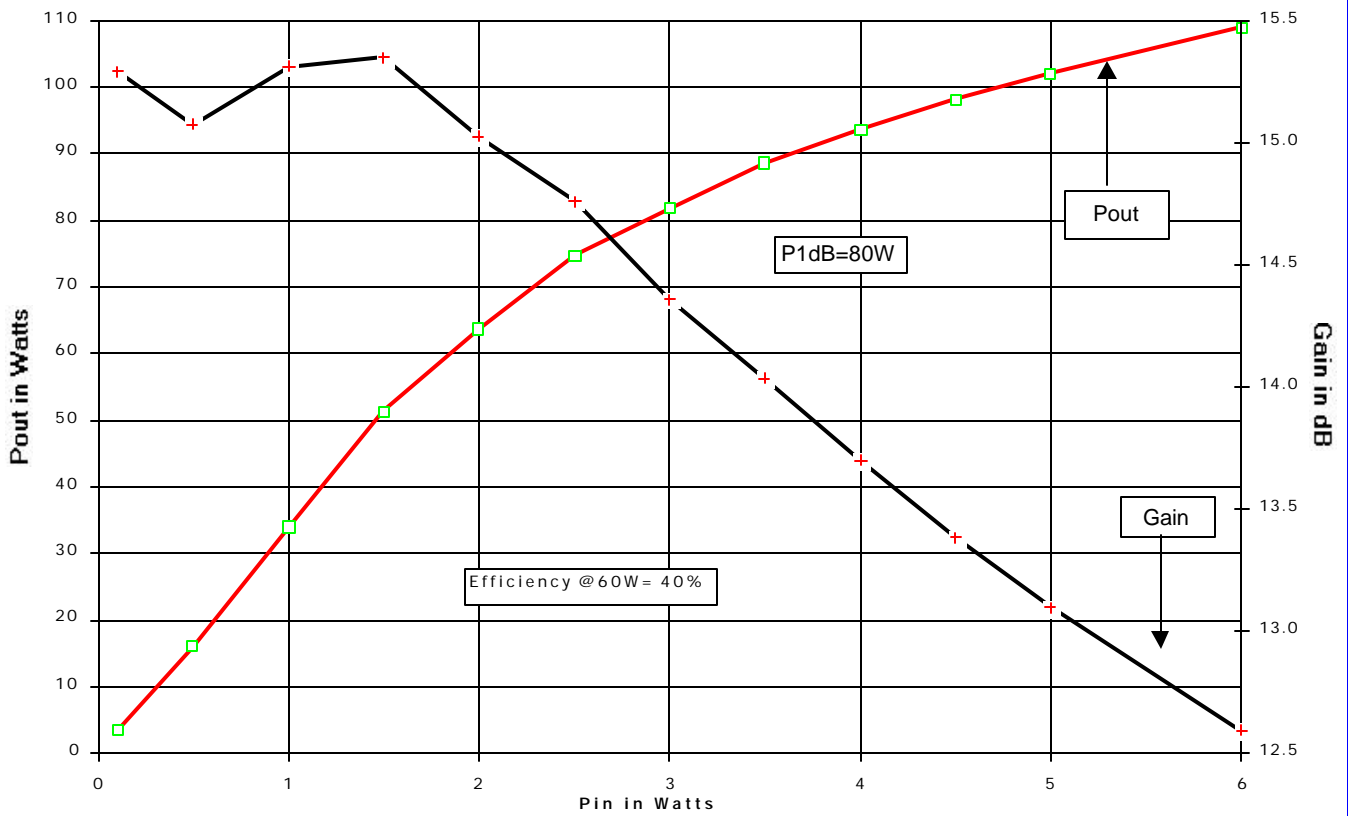
TB-162 LK401 Freq vs Gain/Efficiency; Vds=28Vdc Idq=.8A



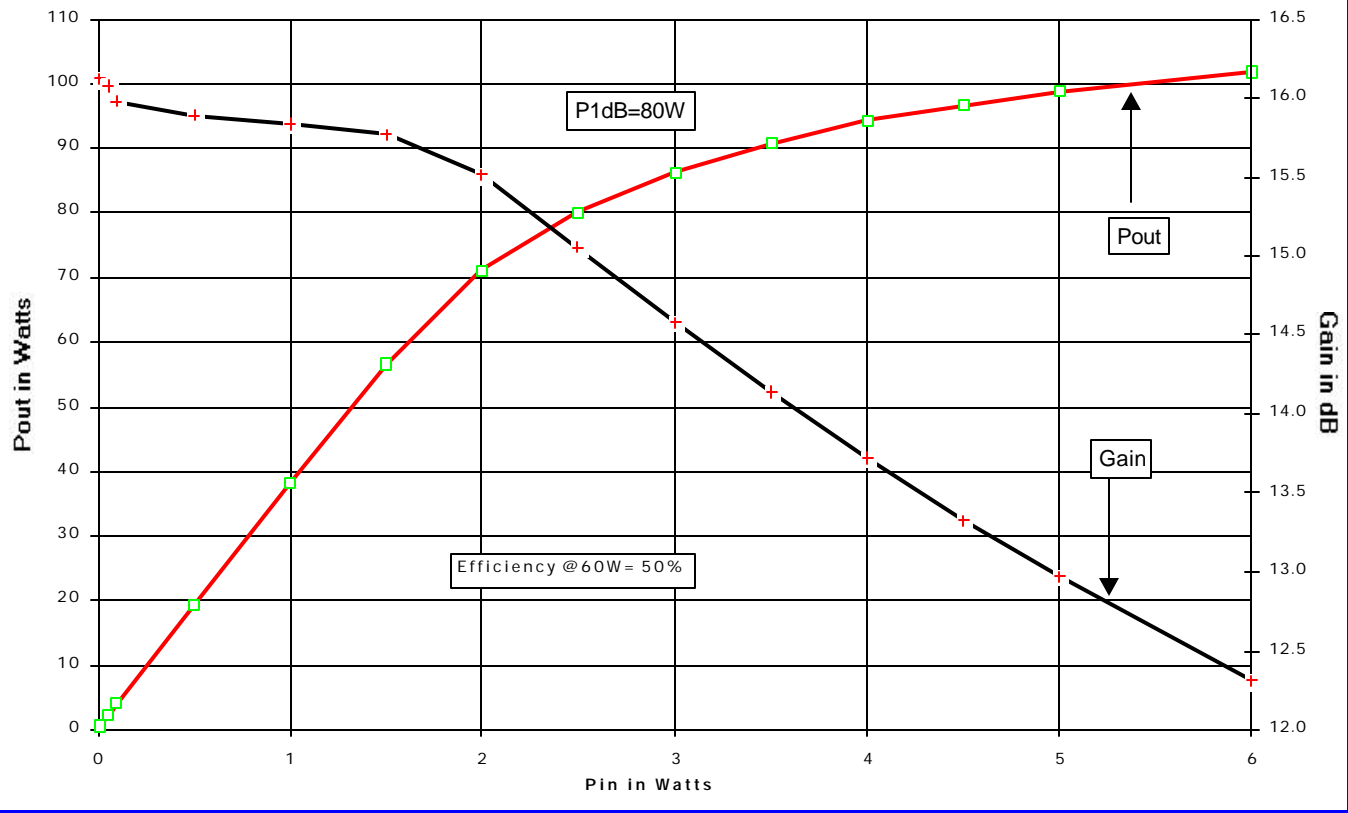
TB-162 LK401 Pin vs Pout Freq=250MHz Vds=28Vdc Idq=800ma

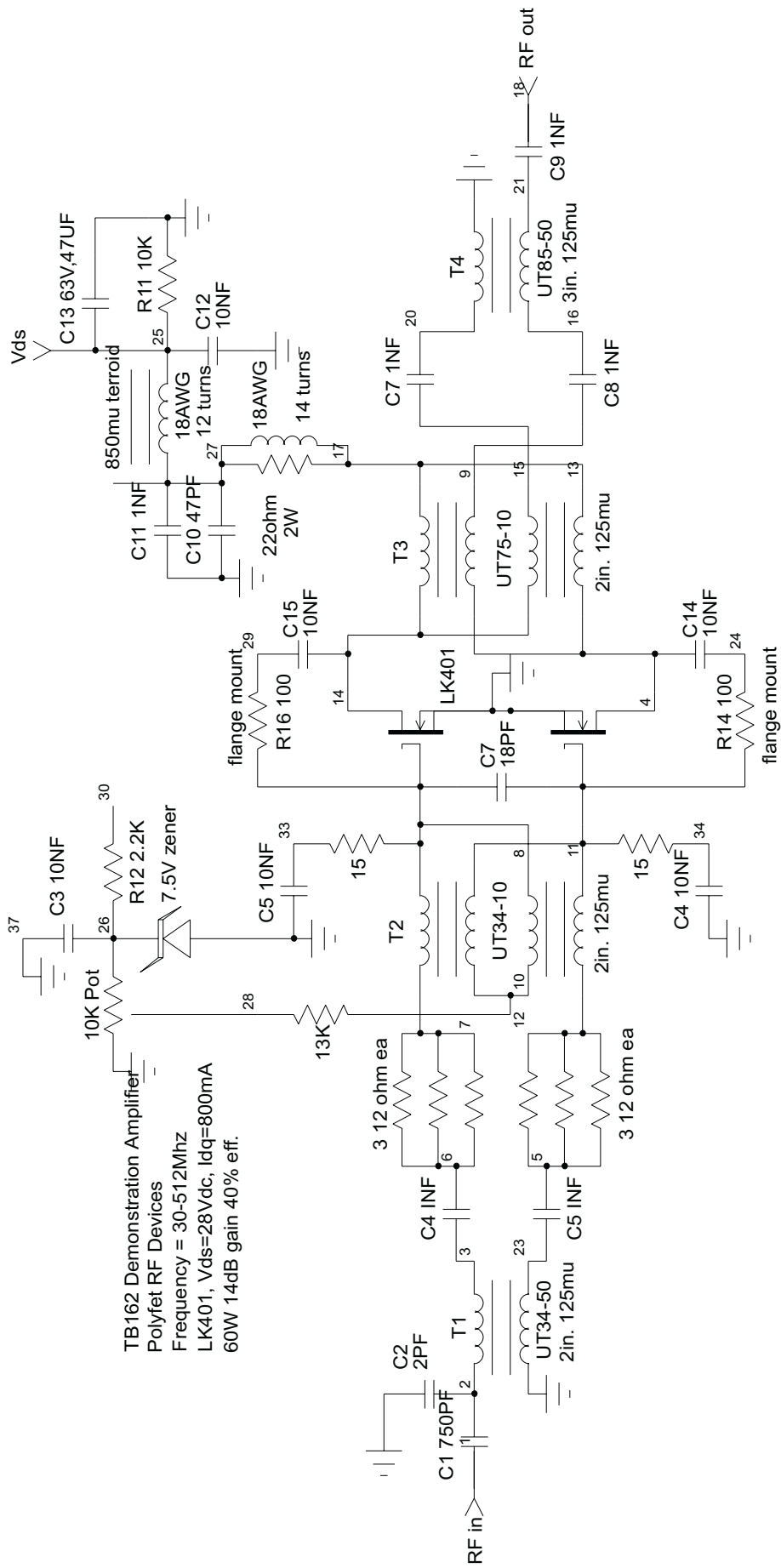


TB-162 LK401 Pin vs Pout Freq=30MHz Vds=28Vdc Idq=800ma



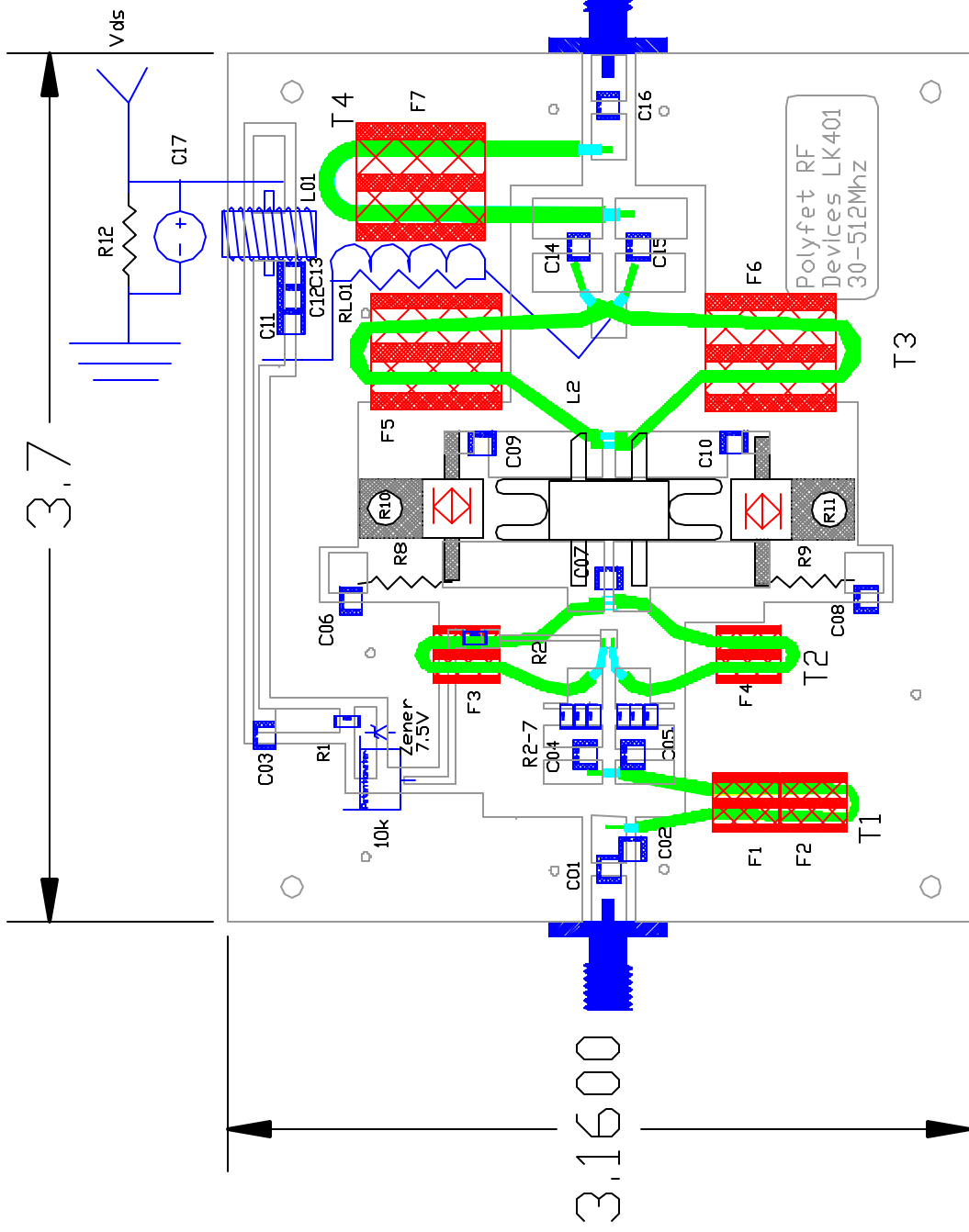
TB-162 LK401 Pin vs Pout Freq=512MHz Vds=28Vdc Idq=800ma





TB162 Demonstration Amplifier
 Polyfet RF Devices
 Frequency = 30-512Mhz
 LK401, Vds=28Vdc, Idq=800mA
 60W 14dB gain 40% eff.

DRN BY	J.Citrololo	3/15/02	Polyfet RF Devices	
CHKD			TB-162 60/80W; 30-512Mhz	
ELECT			SIZE	FSCM NO.
MECH			A	LK402
PREC				
QVAL				
PGMS				



C01	ATC-100B 750pf
C02	ATC-100B 2pf
C03	200 200
C04	ATC-100B 10nf
C05	ATC-100B 18pf
C06	ATC-100B 1nf
C07	ATC-100B 1nf
C08	ATC-100B 47df
C09	47uf 63V elect.
C10	1206 2.2kohm
C11	1206 120ohm
C12	R08R09 1/4W 15ohm
C13	R10R11 10ohm Ferrite mount
C14	R12 1/4W 13kohm
C15	RL01 2V 220mH 18AVG
C16	L01 18AVG 850mu
C17	F1-2 125mu Binocular
C18	F3-7 125mu Binocular
C19	
C20	
C21	
C22	
C23	
C24	
C25	
C26	
C27	
C28	
C29	
C30	
C31	
C32	
C33	
C34	
C35	
C36	
C37	
C38	
C39	
C40	
C41	
C42	
C43	
C44	
C45	
C46	
C47	
C48	
C49	
C50	
C51	
C52	
C53	
C54	
C55	
C56	
C57	
C58	
C59	
C60	
C61	
C62	
C63	
C64	
C65	
C66	
C67	
C68	
C69	
C70	
C71	
C72	
C73	
C74	
C75	
C76	
C77	
C78	
C79	
C80	
C81	
C82	
C83	
C84	
C85	
C86	
C87	
C88	
C89	
C90	
C91	
C92	
C93	
C94	
C95	
C96	
C97	
C98	
C99	
C100	
C101	
C102	
C103	
C104	
C105	
C106	
C107	
C108	
C109	
C110	
C111	
C112	
C113	
C114	
C115	
C116	
C117	
C118	
C119	
C120	
C121	
C122	
C123	
C124	
C125	
C126	
C127	
C128	
C129	
C130	
C131	
C132	
C133	
C134	
C135	
C136	
C137	
C138	
C139	
C140	
C141	
C142	
C143	
C144	
C145	
C146	
C147	
C148	
C149	
C150	
C151	
C152	
C153	
C154	
C155	
C156	
C157	
C158	
C159	
C160	
C161	
C162	
C163	
C164	
C165	
C166	
C167	
C168	
C169	
C170	
C171	
C172	
C173	
C174	
C175	
C176	
C177	
C178	
C179	
C180	
C181	
C182	
C183	
C184	
C185	
C186	
C187	
C188	
C189	
C190	
C191	
C192	
C193	
C194	
C195	
C196	
C197	
C198	
C199	
C200	
C201	
C202	
C203	
C204	
C205	
C206	
C207	
C208	
C209	
C210	
C211	
C212	
C213	
C214	
C215	
C216	
C217	
C218	
C219	
C220	
C221	
C222	
C223	
C224	
C225	
C226	
C227	
C228	
C229	
C230	
C231	
C232	
C233	
C234	
C235	
C236	
C237	
C238	
C239	
C240	
C241	
C242	
C243	
C244	
C245	
C246	
C247	
C248	
C249	
C250	
C251	
C252	
C253	
C254	
C255	
C256	
C257	
C258	
C259	
C260	
C261	
C262	
C263	
C264	
C265	
C266	
C267	
C268	
C269	
C270	
C271	
C272	
C273	
C274	
C275	
C276	
C277	
C278	
C279	
C280	
C281	
C282	
C283	
C284	
C285	
C286	
C287	
C288	
C289	
C290	
C291	
C292	
C293	
C294	
C295	
C296	
C297	
C298	
C299	
C300	
C301	
C302	
C303	
C304	
C305	
C306	
C307	
C308	
C309	
C310	
C311	
C312	
C313	
C314	
C315	
C316	
C317	
C318	
C319	
C320	
C321	
C322	
C323	
C324	
C325	
C326	
C327	
C328	
C329	
C330	
C331	
C332	
C333	
C334	
C335	
C336	
C337	
C338	
C339	
C340	
C341	
C342	
C343	
C344	
C345	
C346	
C347	
C348	
C349	
C350	
C351	
C352	
C353	
C354	
C355	
C356	
C357	
C358	
C359	
C360	
C361	
C362	
C363	
C364	
C365	
C366	
C367	
C368	
C369	
C370	
C371	
C372	
C373	
C374	
C375	
C376	
C377	
C378	
C379	
C380	
C381	
C382	
C383	
C384	
C385	
C386	
C387	
C388	
C389	
C390	
C391	
C392	
C393	
C394	
C395	
C396	
C397	
C398	
C399	
C400	
C401	
C402	
C403	
C404	
C405	
C406	
C407	
C408	
C409	
C410	
C411	
C412	
C413	
C414	
C415	
C416	
C417	
C418	
C419	
C420	
C421	
C422	
C423	
C424	
C425	
C426	
C427	
C428	
C429	
C430	
C431	
C432	
C433	
C434	
C435	
C436	
C437	
C438	
C439	
C440	
C441	
C442	
C443	
C444	
C445	
C446	
C447	
C448	
C449	
C450	
C451	
C452	
C453	
C454	
C455	
C456	
C457	
C458	
C459	
C460	
C461	
C462	
C463	
C464	
C465	
C466	
C467	
C468	
C469	
C470	
C471	
C472	
C473	
C474	
C475	
C476	
C477	
C478	
C479	
C480	
C481	
C482	
C483	
C484	
C485	
C486	
C487	
C488	
C489	
C490	
C491	
C492	
C493	
C494	
C495	
C496	
C497	
C498	
C499	
C500	

T1: UT34-50 2in.
T2: UT34-10 2in.
T3: UT75-10 2in.
T4: UT85-50 3in.

PCB FR4, Er=3.55
.064in. thick

DESIGNED BY	ED C
DATE	2/21/82
ELECT	
MESH	
PRICE	
DUAL	
FBIS	
SCALE	pcd 3/1
POLYFET RF DEVICES	
LK401 30-512Mhz prototype, 28V, 0.8A	
SIZE	FSSM NO
A	TB162
REV	
SHEET 1 OF 1	

F1-F4= AMIDON BN-61-2402 125mu BINOCULAR FERRITE
F5-F7= FERRONICS 12-365-K 125mu BINOCULAR FERRITE
F7 is epoxied to copper thru pck.

