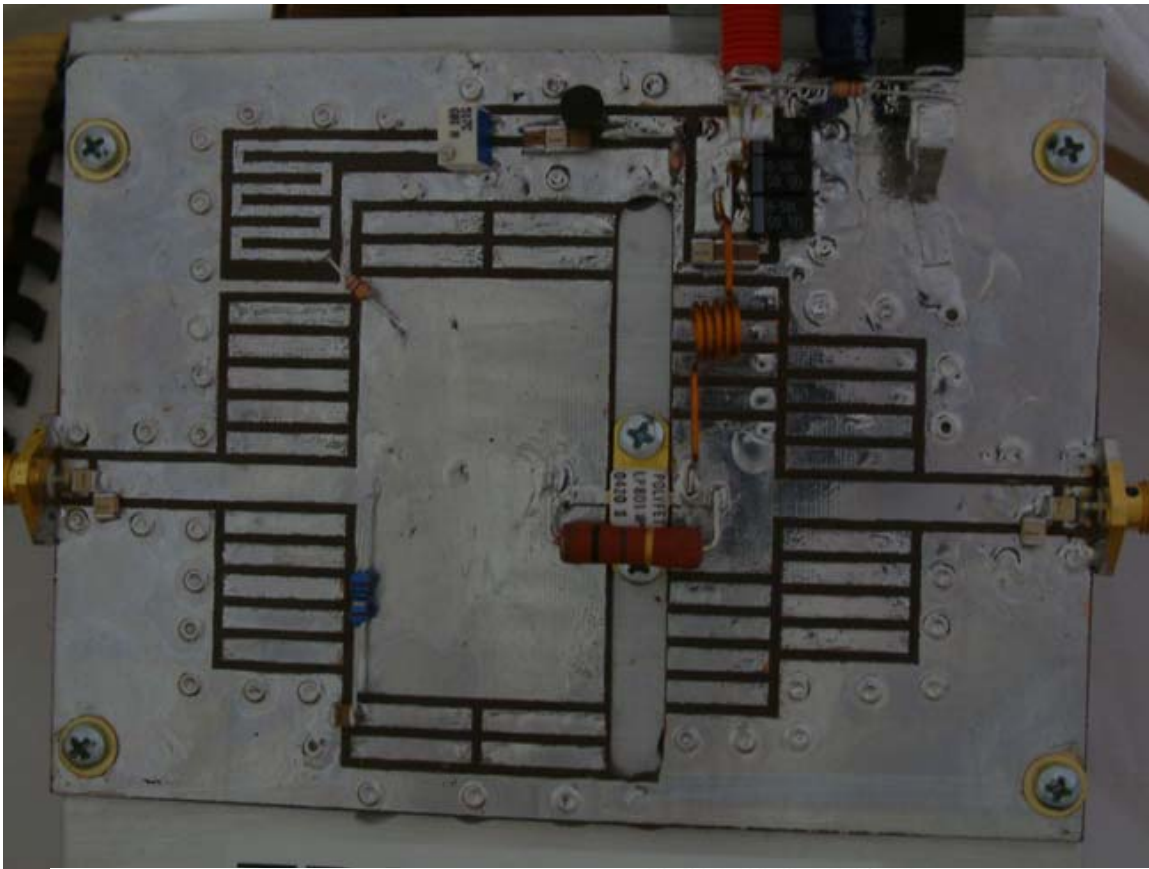


Two-Tone IMD Measurements

Vds=28V					
Idq=0.25A					
Sep: 6MHz					
F1: 470MHz	F2: 476MHz				
Pin 1tone	Pout 1tone	Pout 2tones	3rd	5th	PEP
1.15mW	25mW	49mW	-43.3	<-60	100mW
4.8mW	100mW	185mW	-32.33	<-60	400mW
F1: 620MHz	F2: 626MHz				
Pin 1tone	Pout 1tone	Pout 2tones	3rd	5th	PEP
1.1mW	25mW	50mW	-43	<-60	100mW
4.6mW	100mW	183mW	-32	-55.16	400mW
F1: 764MHz	F2: 770MHz				
Pin 1tone	Pout 1tone	Pout 2tones	3rd	5th	PEP
1.2mW	25mW	49mW	-43.3	<-60	100mW
4.9mW	100mW	185mW	-33.33	-56	400mW

Vds=28V					
Idq=0.5A					
Sep: 6MHz					
F1: 470MHz	F2: 476MHz				
Pin 1tone	Pout 1tone	Pout 2tones	3rd	5th	PEP
0.8mW	25mW	50mW	-54	<-60	100mW
3.1mW	100mW	195mW	-43	<-60	400mW
F1: 620MHz	F2: 626MHz				
Pin 1tone	Pout 1tone	Pout 2tones	3rd	5th	PEP
0.75mW	25mW	50mW	-51	<-60	100mW
3mW	100mW	195mW	-43	<-60	400mW
F1: 764MHz	F2: 770MHz				
Pin 1tone	Pout 1tone	Pout 2tones	3rd	5th	PEP
0.9mW	25mW	50mW	-53	<-60	100mW
3.6mW	100mW	195mW	-45	<-60	400mW

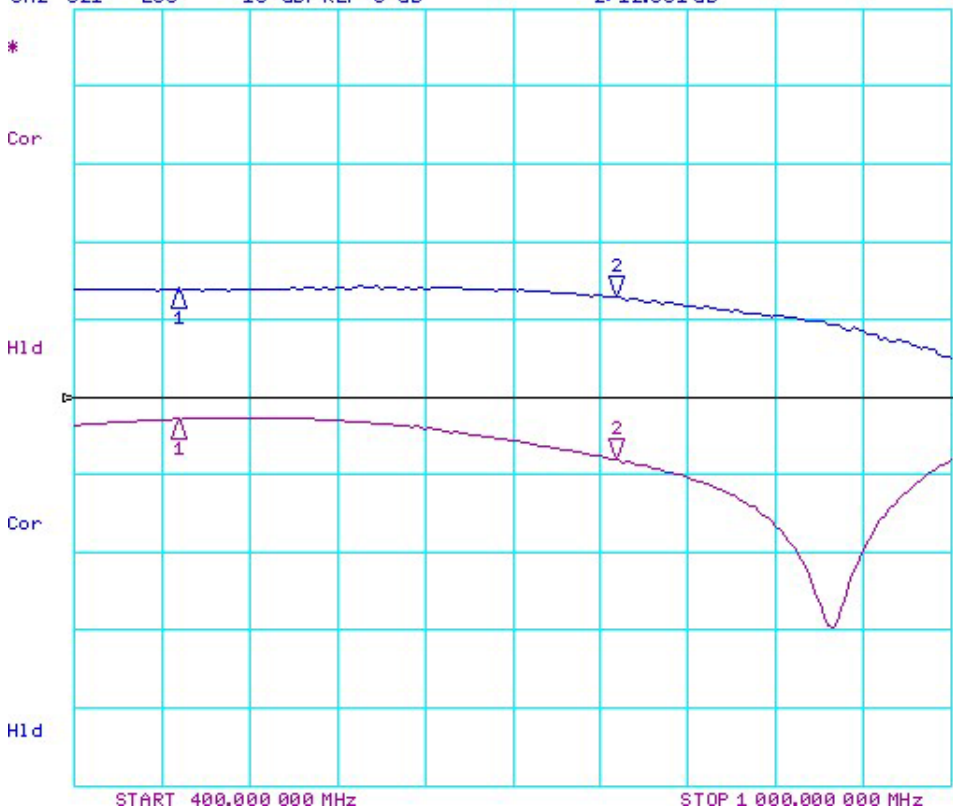
Vds=28V					
Idq=1A					
Sep: 6MHz					
F1: 470MHz	F2: 476MHz				
Pin 1tone	Pout 1tone	Pout 2tones	3rd	5th	PEP
0.75mW	25mW	50mW	<-60	<-60	100mW
2.9mW	100mW	200mW	-55	<-60	400mW
F1: 620MHz	F2: 626MHz				
Pin 1tone	Pout 1tone	Pout 2tones	3rd	5th	PEP
0.75mW	25mW	50mW	<-60	<-60	100mW
2.85mW	100mW	195mW	-55	<-60	400mW
F1: 764MHz	F2: 770MHz				
Pin 1tone	Pout 1tone	Pout 2tones	3rd	5th	PEP
0.9mW	25mW	50mW	<-60	<-60	100mW
3.7mW	100mW	200mW	-55	<-60	400mW



19 Sep 2005 12:34:27

CH1 S11 LOG 10 dB/REF 0 dB
 CH2 S21 LOG 10 dB/REF 0 dB

2: -8.0930 dB 770.000 000 MHz
 2: 12.851 dB



CH1 Markers

1: -2.8339 dB
 470.000 MHz

CH2 Markers

1: 13.797 dB
 470.000 MHz

START 400.000 000 MHz

STOP 1 000.000 000 MHz