

TB217#3

Frequency=30-512MHz

Pout=10W

Gain=10dB

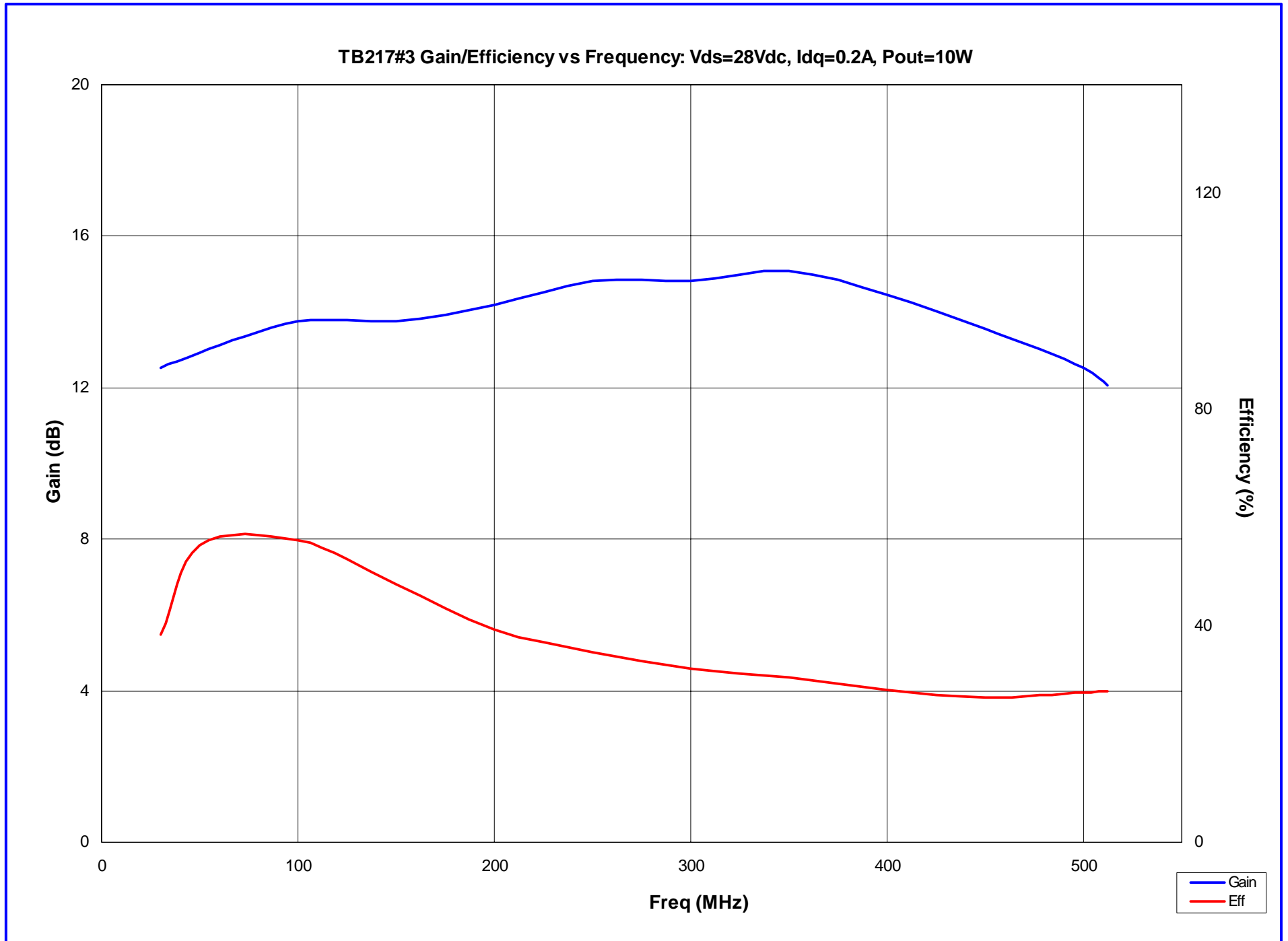
Vds=28Vdc

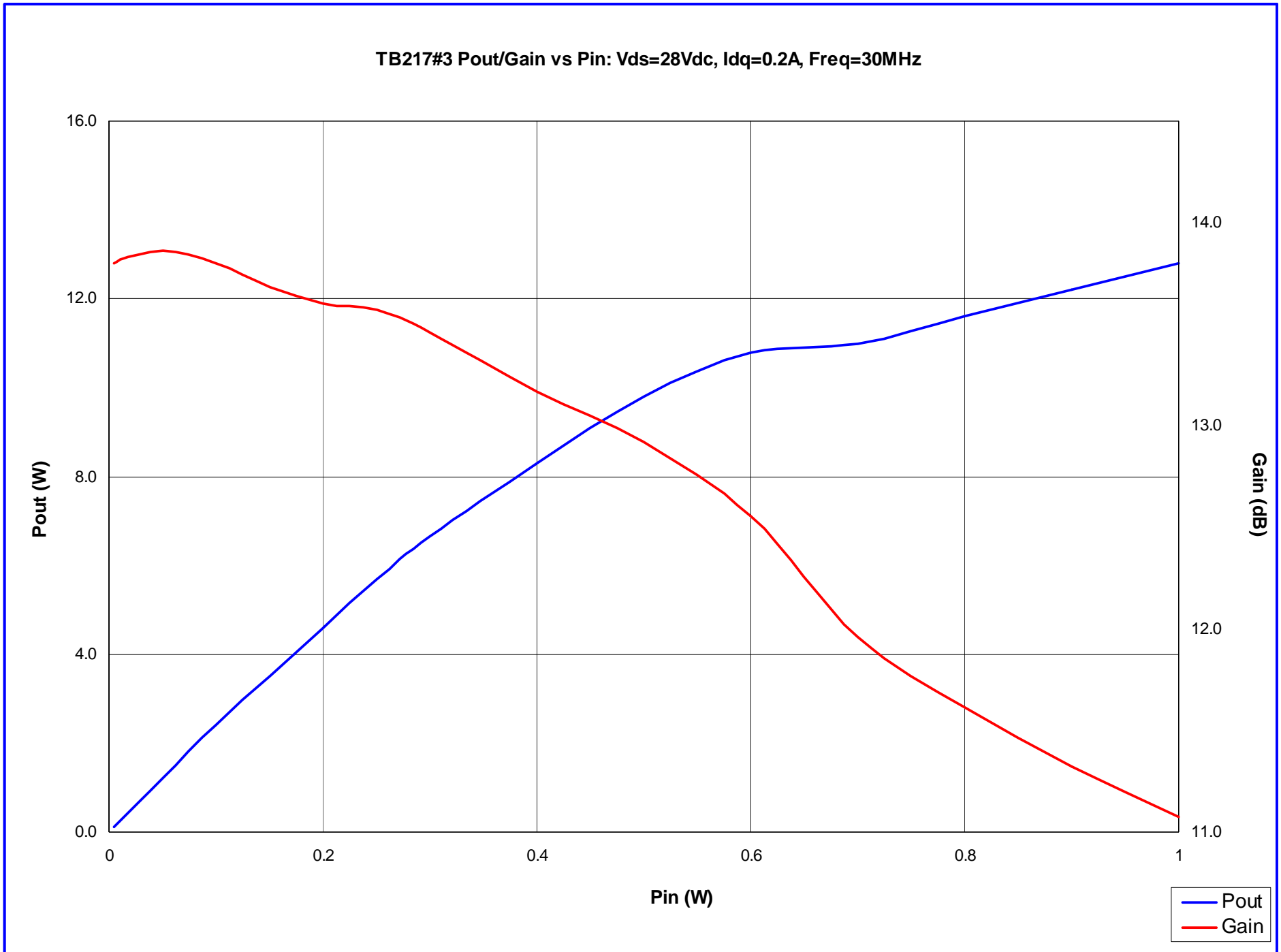
Idq=0.2A

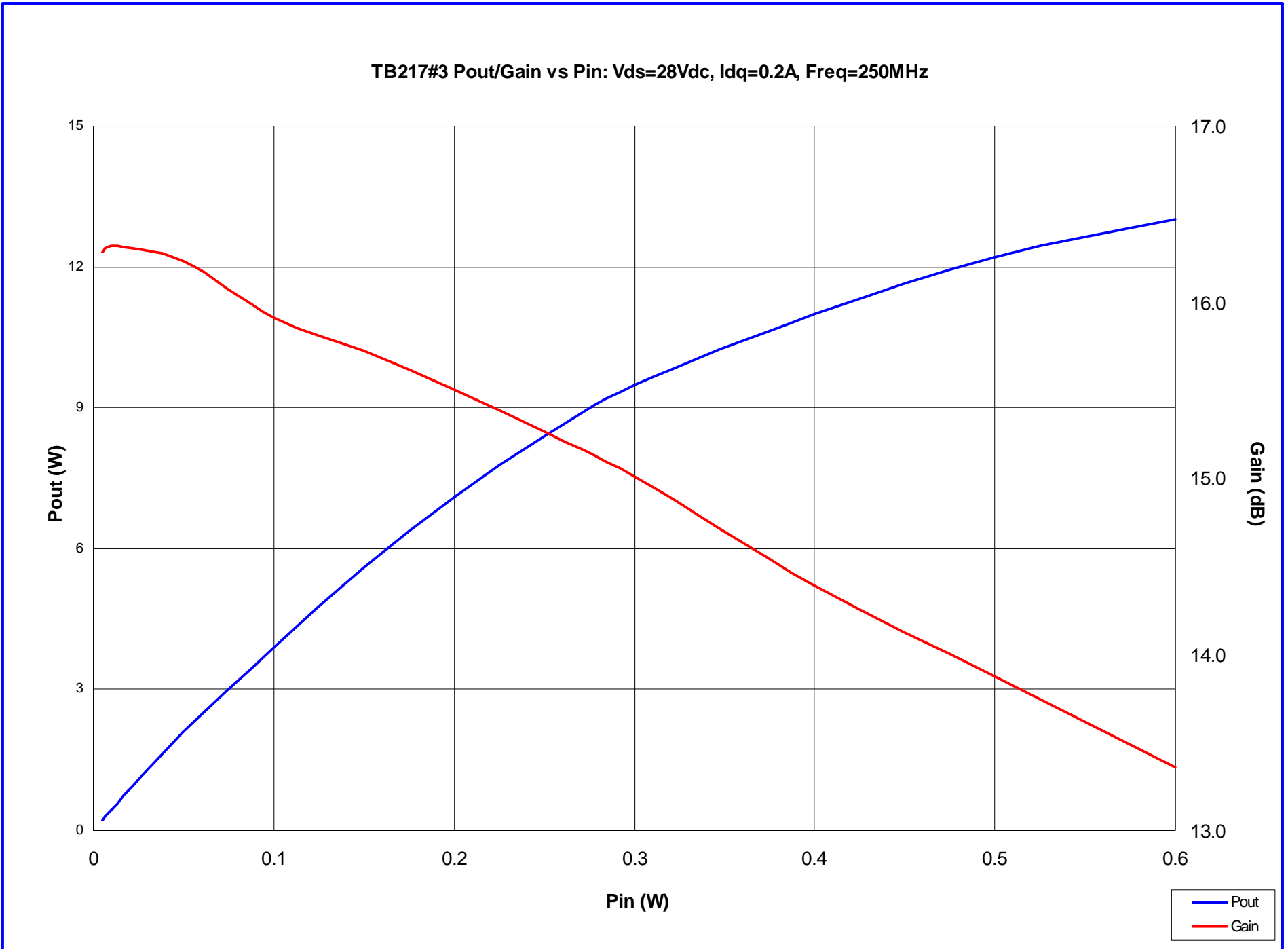
Efficiency=30 to 55%

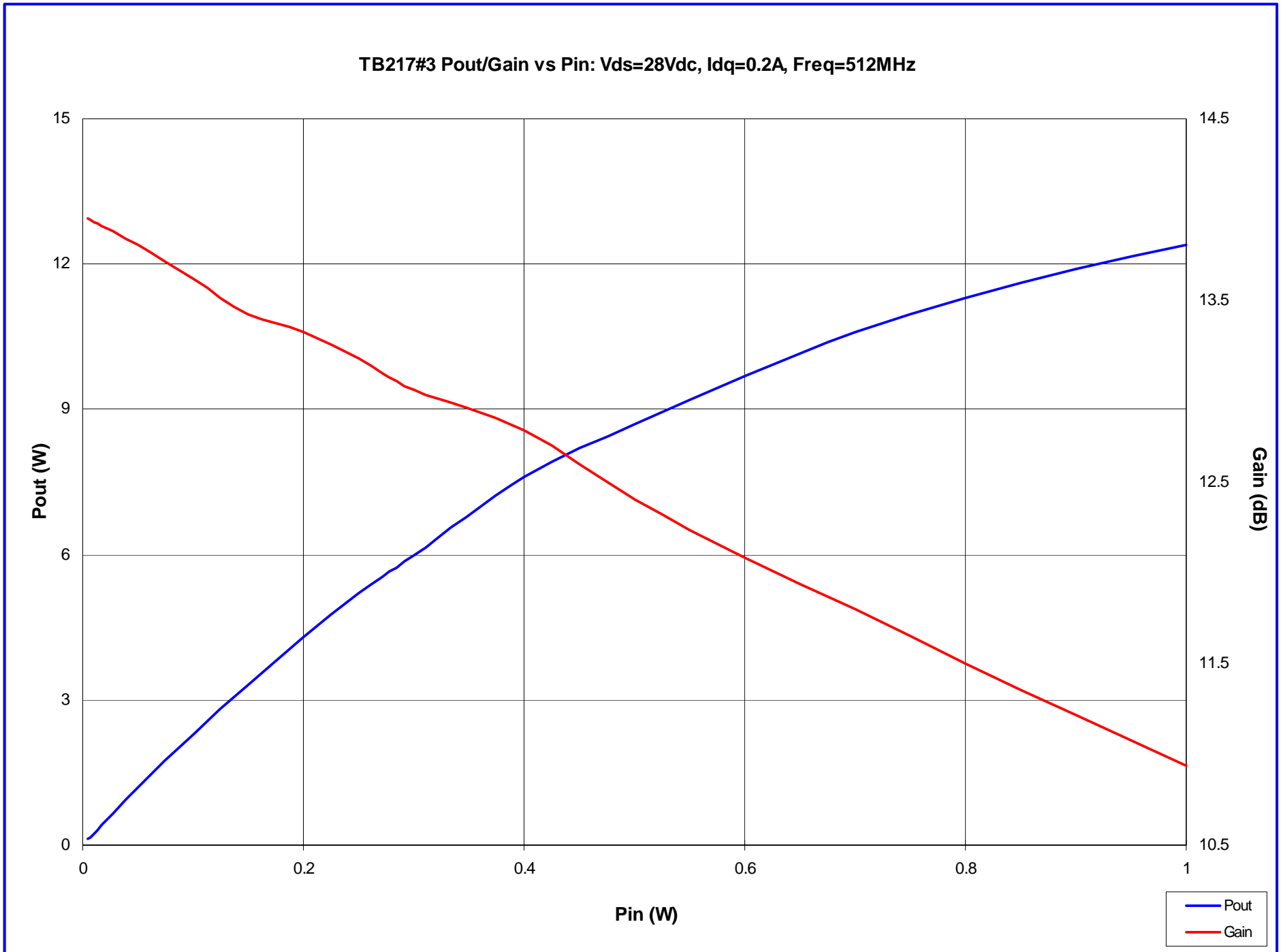
LP801

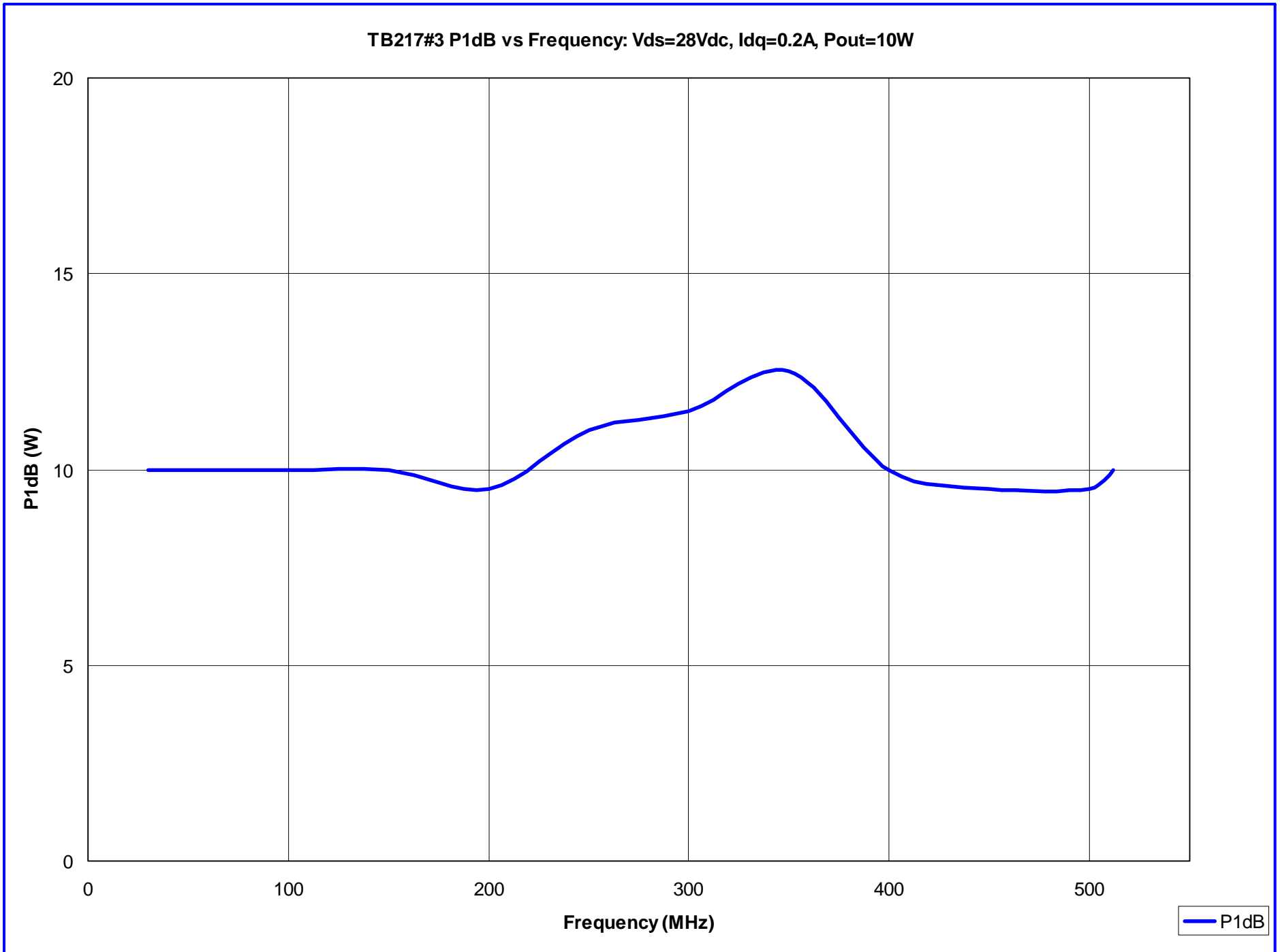


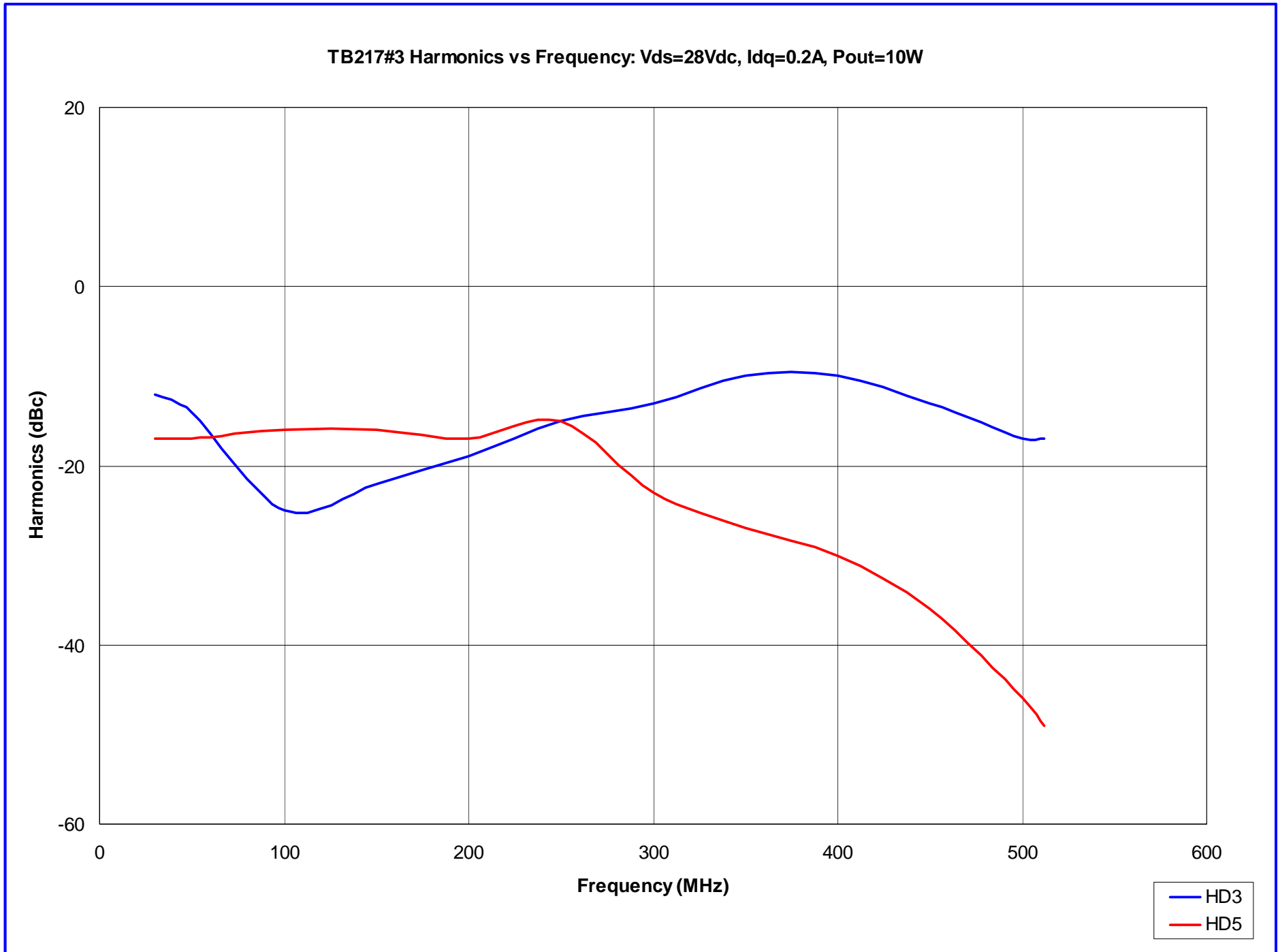


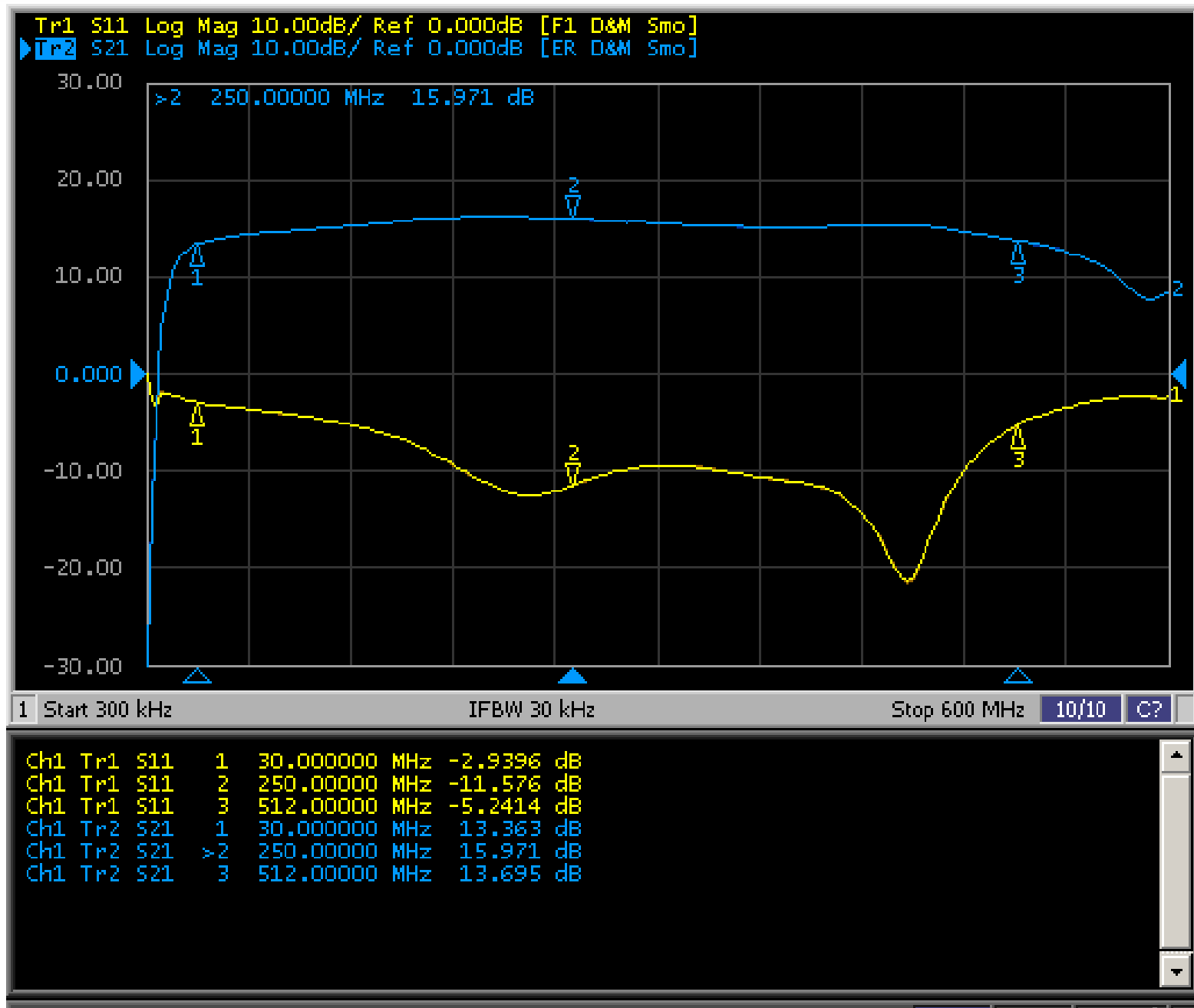




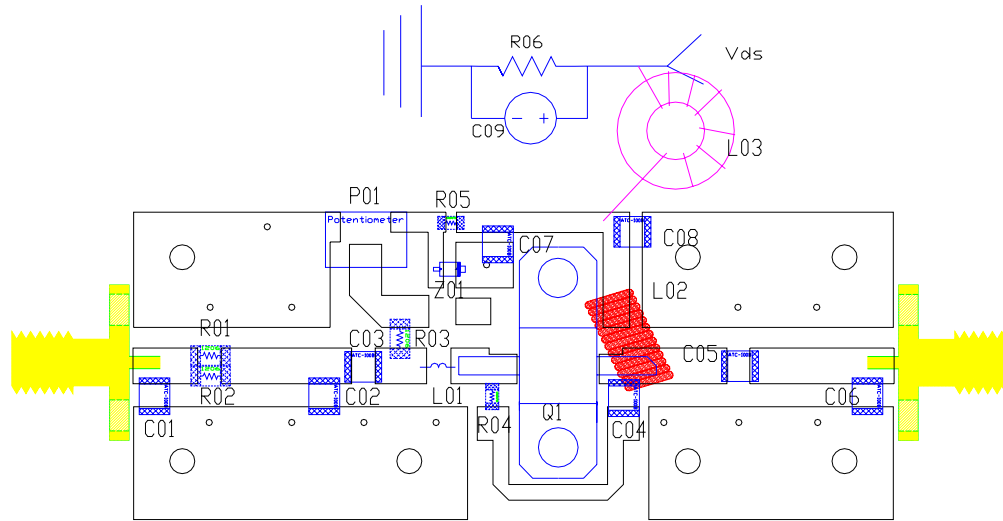








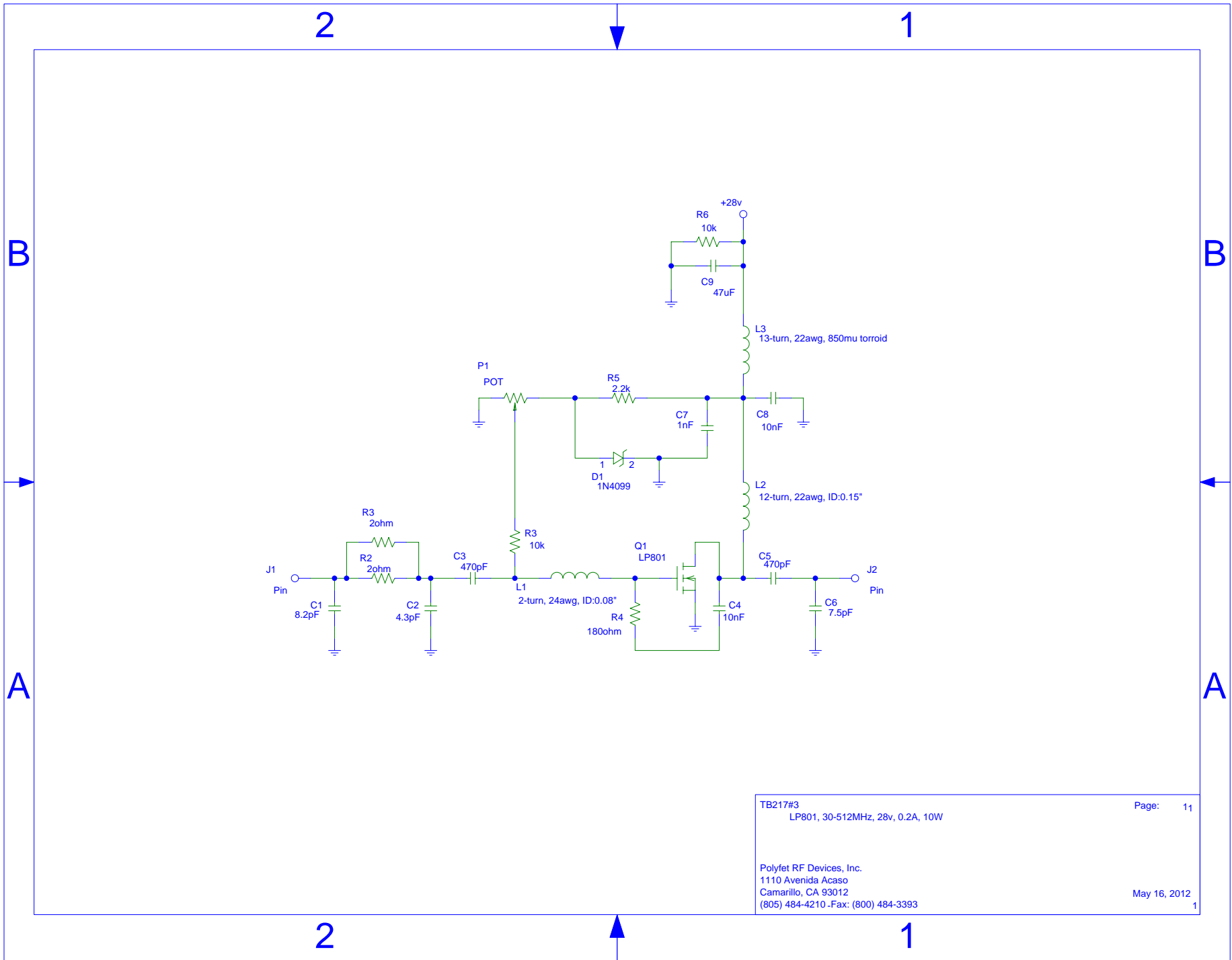
TB217#3: Vds=28Vdc, Idq=0.2A, Pin=0dBm



PCB Material: Double Side FR4
 H=0.032", T=0.001"

DRN BY Marcos Cervantes	05/27/11	Polyfet RF Devices		
CHKD		LP801 30-512MHz		
ELECT E. Cunningham	05/27/11	SIZE	SCALE	REV
J. Anloague	5/15/2012	1:1	TB217#3	0
MECH Jonathan Anloague	5/15/2012			
PRDC				
QUAL				
PGMS				

(Polyfet TB217B#3)			
NOMENCLATURE	DESCRIPTION	VENDER	VENDER PART #
C01	8.2pF Porcelain Superchip Multilayer Capacitor	ATC	100B8R2CW50X
C02	4.3pF Porcelain Superchip Multilayer Capacitor	ATC	100B4R3CW50X
C03, C05	470pF Porcelain Superchip Multilayer Capacitor	ATC	100B471KW50X
C04, C08	10nF Ceramic Multilayer Capacitor	ATC	200B103MW50X
C06	7.5pF Porcelain Superchip Multilayer Capacitor	ATC	100B7R5BW50X
C07	1nF Porcelain Superchip Multilayer Capacitor	ATC	100B102KW50X
C09	47uF Aluminum Electrolytic Cap, 63V	Digi-Key	PCE3763CT-ND
R01, R02	RES 2.0Ohm 1/4W 5% 1206 SMD	Digi-Key	RHM2.0ECT-ND
R03	RES 10kOhm 1/4W 5% 1206 SMD	Digi-Key	RHM10kECT-ND
R04	RES 180Ohm 1/4W 5% 1206 SMD	Digi-Key	RHM180ECT-ND
R05	RES 2.2kOhm 1/4W 5% 1206 SMD	Digi-Key	RHM2.2kECT-ND
R06	RES 10kOhm 1/4W 5% Carbon Film	Digi-Key	10KH-ND
P01	Trimmer Resistors – 10kOhm 0.25W SMD	Mouser Electronics	490-2661-1-ND
Z01	7.5V 5mA Zener Diode	Digi-Key	MA8075CT
L01	2 turn Mini Spring Air Core Inductor	Coilcraft	A02TGL
L02	Magnet Wire, 22AWG, 12-turns, ID:0.15"	www.electromechanicsonline.com	MW220SPNRD
L03	Magnet Wire, 22AWG, 13-turns around 850ui, Torroid Ferrite	www.electromechanicsonline.com Amidon	MW220SPNRD FT-50-43
Q1	LDMOS	Polyfet RF Devices	LP801
J1, J2	SMA Female; 4 Hole Panel Mount	Pasternack	PE4000-SF
PCB	Low-Loss Ceramic Filled PTFE, ER=4.5, 0.064", 2oz.	Taconic	TRF-45-064-C2/C2



TB217#3
 LP801, 30-512MHz, 28v, 0.2A, 10W

Page: 11

Polyfet RF Devices, Inc.
 1110 Avenida Acaso
 Camarillo, CA 93012
 (805) 484-4210 - Fax: (800) 484-3393

May 16, 2012

1